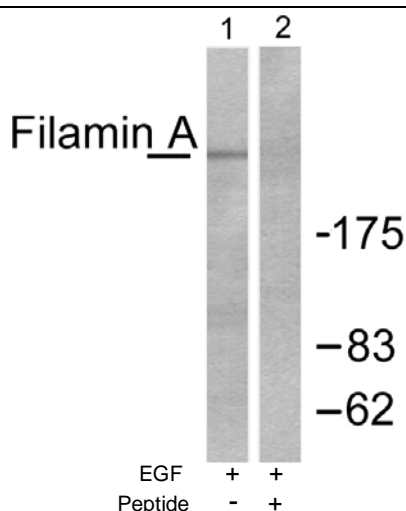




Filamin A (Ab-2152) Antibody

E11-0072B

- Catalog Number:** E11-0072B
- Amount:** 100µg/100µl
- Swiss-Prot No. :** P23443
- All Names:** ABP-280, Alpha-filamin, Endothelial actin-binding protein, FLN, FLN1, Filamin 1, Nonmuscle filamin, filamin A
- Form of Antibody:** Rabbit IgG in phosphate buffered saline (without Mg^{2+} and Ca^{2+}), pH 7.4, 150mM NaCl, 0.02% sodium azide and 50% glycerol.
- Storage/Stability:** Store at -20°C/1 year
- Immunogen:** The antiserum was produced against synthesized non-phosphopeptide derived from human Filamin A around the phosphorylation site of serine 2152 (A-P-S^P-V-A).
- Purification:** The antibody was affinity-purified from rabbit antiserum by affinity-chromatography using epitope-specific immunogen.
- Specificity/Sensitivity:** Filamin A (Ab-2152) antibody detects endogenous levels of total Filamin A protein.
- Reactivity:** Human, Mouse, Rat
- Applications:** WB: 1:500~1:1000 ELISA: 1:10000
- References:** Atul Deshmukh, Diabetes, Jun 2006; 55: 1776 - 1782.
Michele S. Woo, Mol. Cell. Biol., Apr 2004; 24: 3025 - 3035.
D. Wallach, J. Biol. Chem., Jul 1978; 253: 4739 - 4745.
Kyeong-Man Kim, J. Biol. Chem., Apr 2005; 280: 12774 - 12780.



For Research Use Only