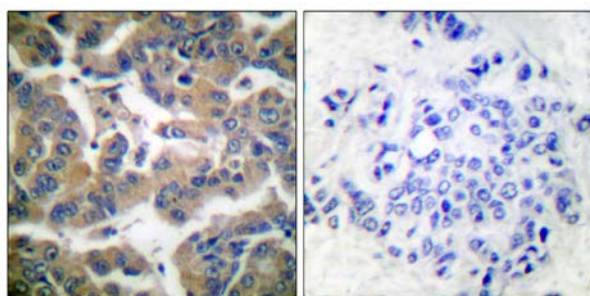




## GR (Phospho-Ser211) Antibody

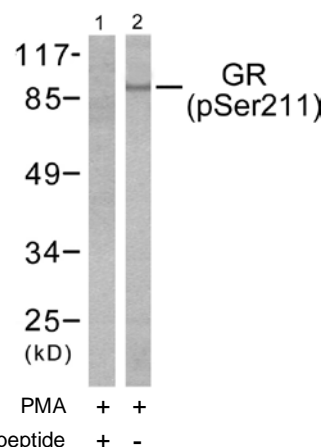
E11-0073A

- Catalog Number:** E11-0073A
- Amount:** 100µg/100µl
- Swiss-Prot No. :** P04150
- All Names:** GCR, GRL, GRL1, NR3C1, glucocorticoid receptor
- All Sites:** Human: Ser211; Mouse: Ser220; Rat: Ser232
- Form of Antibody:** Rabbit IgG in phosphate buffered saline (without  $Mg^{2+}$  and  $Ca^{2+}$ ), pH 7.4, 150mM NaCl, 0.02% sodium azide and 50% glycerol.
- Storage/Stability:** Store at -20°C/1 year
- Immunogen:** The antiserum was produced against synthesized phosphopeptide derived from human GR around the phosphorylation site of serine 211 (N-E-S<sup>P</sup>-P-W).
- Purification:** The antibody was affinity-purified from rabbit antiserum by affinity-chromatography using epitope-specific phosphopeptide. The antibody against non-phosphopeptide was removed by chromatography using non-phosphopeptide corresponding to the phosphorylation site.
- Specificity/Sensitivity:** GR (phospho-Ser211) antibody detects endogenous levels of GR only when phosphorylated at serine 211.
- Reactivity:** Human, Mouse, Rat
- Applications:** WB: 1: 500~1:1000      IHC: 1:50~1:100  
ELISA: 1:5000
- References:** Zhen Wang, Mol. Endocrinol., Mar 2007; 21: 625 - 634.  
Aaron L. Miller, Mol. Endocrinol., Jun 2005; 19: 1569 - 1583.  
Paul J. LeBlanc, J. Physiol., Jun 2004; 557: 559 - 570.  
José Xavier-Neto, Hypertension, Jul 1999; 34: 31.



P-peptide                      -                      +

Immunohistochemical analysis of paraffin-embedded human breast carcinoma tissue using GR (phospho-Ser211) antibody.



Western blot analysis of extracts from HeLa cells treated with PMA (125ng/ml, 30min), using GR (phospho-Ser211) antibody.

**For Research Use Only**