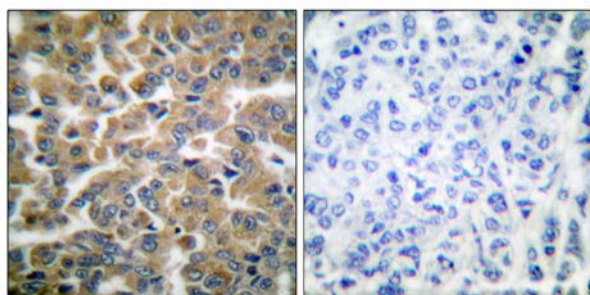




GR (Ab-211) Antibody

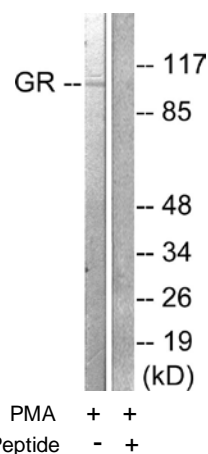
E11-0073B

- Catalog Number:** E11-0073B
- Amount:** 100µg/100µl
- Swiss-Prot No.:** P04150
- All Names:** GCR, GRL, GRL1, NR3C1, glucocorticoid receptor
- Form of Antibody:** Rabbit IgG in phosphate buffered saline (without Mg^{2+} and Ca^{2+}), pH 7.4, 150mM NaCl, 0.02% sodium azide and 50% glycerol.
- Storage/Stability:** Store at -20°C/1 year
- Immunogen:** The antiserum was produced against synthesized non-phosphopeptide derived from human GR around the phosphorylation site of serine 211 (N-E-S-P-W).
- Purification:** The antibody was affinity-purified from rabbit antiserum by affinity-chromatography using epitope-specific immunogen.
- Specificity/Sensitivity:** GR (Ab-211) antibody detects endogenous levels of total GR protein.
- Reactivity:** Human, Mouse, Rat
- Applications:** WB: 1:500~1:1000 IHC: 1:50~1:100
IF: 1:100~1:500 ELISA: 1:40000
- References:** Zhen Wang, Mol. Endocrinol., Mar 2007; 21: 625 - 634.
Aaron L. Miller, Mol. Endocrinol., Jun 2005; 19: 1569 - 1583.
Paul J. LeBlanc, J. Physiol., Jun 2004; 557: 559 - 570.
José Xavier-Neto, Hypertension, Jul 1999; 34: 31.



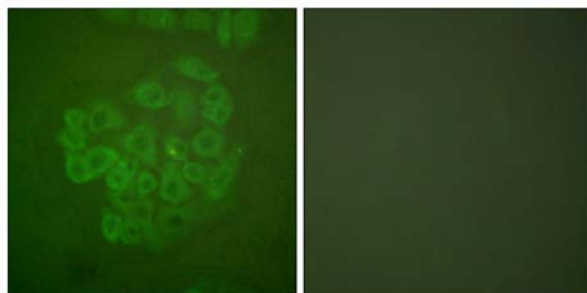
Peptide - +

Immunohistochemical analysis of paraffin-embedded human breast carcinoma tissue using GR (Ab-211) antibody (#B0073).



Western blot analysis of extracts from HeLa cells treated with PMA (125ng/ml, 30min), using GR (Ab-211) antibody (#B0073, Line 1 and 2).

For Research Use Only



Peptide

-

+

Immunofluorescence analysis of A549 cells, using GR
(Ab-211) antibody (#B0073).