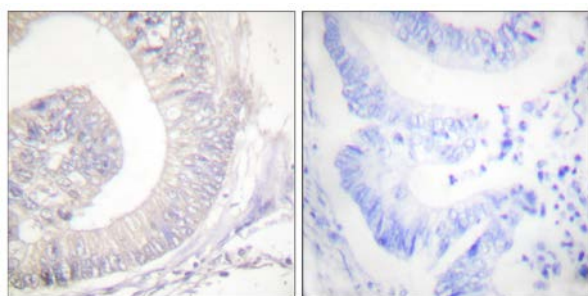




## HSL (Phospho-Ser855/554) Antibody

E11-0074A

- Catalog Number:** E11-0074A
- Amount:** 100µg/100µl
- Swiss-Prot No. :** Q05469
- All Names:** EC 3.1.1.79, Hormone sensitive lipase, LIPE, LIPS
- All Sites:** Human: Ser855; Mouse: Ser559; Rat: Ser865
- Form of Antibody:** Rabbit IgG in phosphate buffered saline (without  $Mg^{2+}$  and  $Ca^{2+}$ ), pH 7.4, 150mM NaCl, 0.02% sodium azide and 50% glycerol.
- Storage/Stability:** Store at -20°C/1 year
- Immunogen:** The antiserum was produced against synthesized phosphopeptide derived from human HSL around the phosphorylation site of serine 855/554 (S-V-S<sup>P</sup>-E-A).
- Purification:** The antibody was affinity-purified from rabbit antiserum by affinity-chromatography using epitope-specific phosphopeptide. The antibody against non-phosphopeptide was removed by chromatography using non-phosphopeptide corresponding to the phosphorylation site.
- Specificity/Sensitivity:** HSL (Phospho-Ser855/554) antibody detects endogenous levels of HSL only when phosphorylated at serine 855/554.
- Reactivity:** Human, Mouse, Rat
- Applications:** WB: 1:500~1000      IHC: 1:50~1:100  
ELISA: 1:20000
- References:** Matthew J. Watt, Am J Physiol Endocrinol Metab, Mar 2006; 290: E500 - E508.  
Maya S. Gowri, Am J Physiol Endocrinol Metab, Sep 2000; 279: E593 - E600.  
Matthew J. Watt, Am J Physiol Endocrinol Metab, Jul 2004; 287: E120 - E127.  
Shu Pei Wang, Endocrinology, Dec 2004; 145: 5688 - 5693.

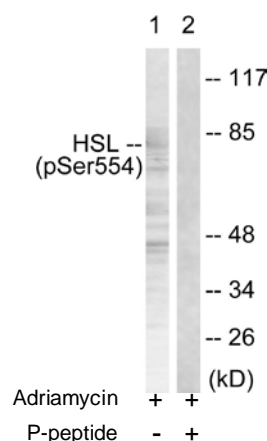


P-peptide

-

+

Immunohistochemical analysis of paraffin-embedded human colon carcinoma tissue using HSL (Phospho-Ser855/554) antibody (#A0074).



Western blot analysis of extracts from HeLa cells treated with Adriamycin (0.5ng/ml, 24hours), using HSL (Phospho-Ser855/554) antibody (#A0074).

**For Research Use Only**