



HSL (Ab-554) Antibody

E11-0074B

Catalog Number: E11-0074B

Concentration: 1mg/ml

Swiss-Prot No.: Q05469

Other Names: EC 3.1.1.79, Hormone sensitive lipase, LIPE, LIPS

Storage/Stability: Store at -20°C/1 year

Form of Antibody: Rabbit IgG in phosphate buffered saline (without Mg^{2+} and Ca^{2+}), pH 7.4, 150mM NaCl, 0.02% sodium azide and 50% glycerol.

Immunogen: The antiserum was produced against synthesized non-phosphopeptide derived from human HSL around the phosphorylation site of serine 554 (S-V-S^P-E-A).

Purification: The antibody was affinity-purified from rabbit antiserum by affinity-chromatography using epitope-specific immunogen.

Specificity: HSL (Ab-554) antibody detects endogenous levels of total HSL protein.

Reactivity: Human, Mouse, Rat

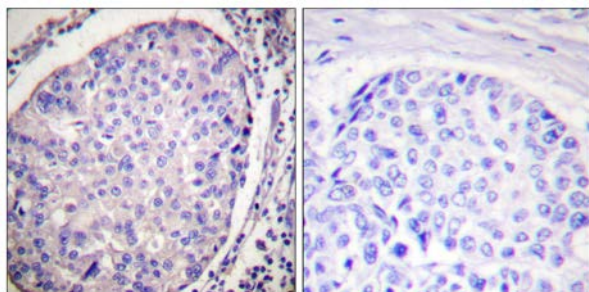
Applications: WB: 1:500~1:1000 IHC: 1:50~1:100
ELISA: 1:1000

References:

Matthew J. Watt, Am J Physiol Endocrinol Metab, Mar 2006; 290: E500 - E508.

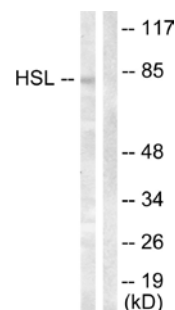
Maya S. Gowri, Am J Physiol Endocrinol Metab, Sep 2000; 279: E593 - E600.

Matthew J. Watt, Am J Physiol Endocrinol Metab, Jul 2004; 287: E120 - E127.



Peptide - +

Immunohistochemistry analysis of paraffin-embedded human breast carcinoma tissue using HSL (Ab-554) antibody.



Calyculin A + +
Peptide - +

Western blot analysis of extracts from HeLa cells, treated with Calyculin A (100nM, 30mins), using HSL (Ab-554) antibody.

For Research Use Only