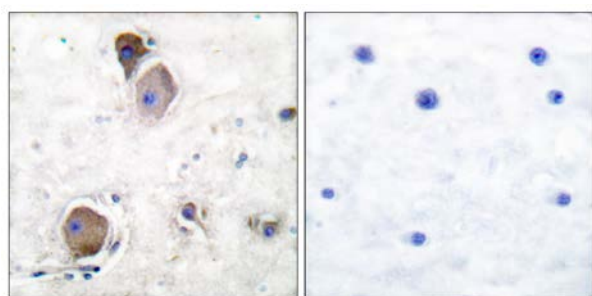




Lyn (Phospho-Tyr507) Antibody

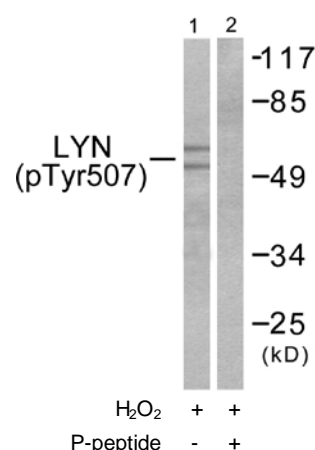
E11-0076A

- Catalog Number:** E11-0076A
- Amount:** 100µg/100µl
- Swiss-Prot No. :** P07948
- All Names:** ONCOGENE LYN, v-src-1 Yamaguchi sarcoma viral related oncogene homolog
- All Sites:** Human: Tyr507; Mouse: Tyr507; Rat: Tyr508
- Form of Antibody:** Rabbit IgG in phosphate buffered saline (without Mg^{2+} and Ca^{2+}), pH 7.4, 150mM NaCl, 0.02% sodium azide and 50% glycerol.
- Storage/Stability:** Store at -20°C/1 year
- Immunogen:** The antiserum was produced against synthesized phosphopeptide derived from human Lyn around the phosphorylation site of tyrosine 507 (G-Q-Y^P-Q-Q).
- Purification:** The antibody was affinity-purified from rabbit antiserum by affinity-chromatography using epitope-specific phosphopeptide. The antibody against non-phosphopeptide was removed by chromatography using non-phosphopeptide corresponding to the phosphorylation site.
- Specificity/Sensitivity:** Lyn (Phospho-Tyr507) antibody detects endogenous levels of Lyn only when phosphorylated at tyrosine 507.
- Reactivity:** Human, Mouse, Rat
- Applications:** WB: 1:500~1000 IHC: 1:50~100
ELISA: 1:1000
- References:** Fu-Jun Li, Blood, Apr 2005; 105: 3295 - 3302.
Naohiro Tsuyama, AACR Meeting Abstracts, Apr 2005; 2005: 1083.
Antonella Contri, J. Clin. Invest., Feb 2005; 115: 369 - 378.
Wenbin Xiao, J. Immunol., Nov 2005; 175: 6885 - 6892.



P-peptide - +

Immunohistochemical analysis of paraffin-embedded human brain tissue using Lyn (Phospho-Tyr507) antibody (#A0076).



Western blot analysis of extracts from K562 cells treated with H_2O_2 (100uM, 30mins), using Lyn (Phospho-Tyr507) antibody (#A0076).

For Research Use Only