



## Lyn (Ab-507) Antibody

E11-0076B

**Catalog Number:** E11-0076B

**Amount:** 100µg/100µl

**Swiss-Prot No.:** P07948

**All Names:** NCOGENE LYN, v-src-1 Yamaguchi sarcoma viral related oncogene homolog

**Form of Antibody:** Rabbit IgG in phosphate buffered saline (without  $Mg^{2+}$  and  $Ca^{2+}$ ), pH 7.4, 150mM NaCl, 0.02% sodium azide and 50% glycerol.

**Storage/Stability:** Store at -20°C/1 year

**Immunogen:** The antiserum was produced against synthesized non-phosphopeptide derived from human Lyn around the phosphorylation site of tyrosine 507 (G-Q-Y-Q-Q).

**Purification:** The antibody was affinity-purified from rabbit antiserum by affinity-chromatography using epitope-specific immunogen.

**Specificity/Sensitivity:** Lyn (Ab-507) antibody detects endogenous levels of total Lyn protein.

**Reactivity:** Human, Mouse, Rat

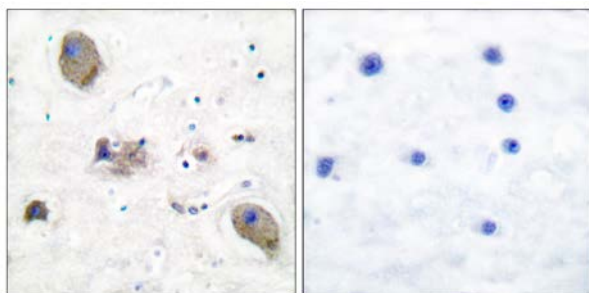
**Applications:** WB: 1:300~1:1000      IHC: 1:50~1:100  
ELISA: 1:1000

**References:** Fu-Jun Li, Blood, Apr 2005; 105: 3295 - 3302.

Naohiro Tsuyama, AACR Meeting Abstracts, Apr 2005; 2005: 1083.

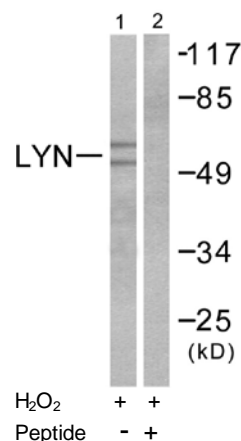
Antonella Contri, J. Clin. Invest., Feb 2005; 115: 369 - 378.

Wenbin Xiao, J. Immunol., Nov 2005; 175: 6885 - 6892.



Peptide                      -                      +

Immunohistochemical analysis of paraffin-embedded human brain tissue using Lyn (Ab-507) antibody (#B0076).



Western blot analysis of extracts from K562 cells treated with  $H_2O_2$  (100uM, 30mins), using Lyn (Ab-507) antibody (#B0076).

**For Research Use Only**