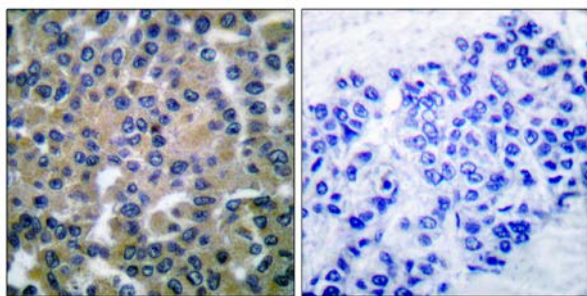




SYK (Ab-348) Antibody

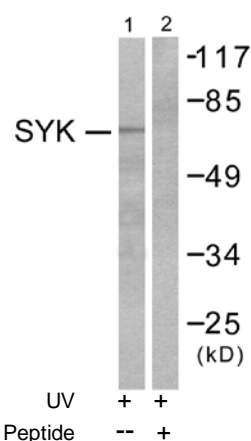
E11-0091B

- Catalog Number:** E11-0091B
- Amount:** 100µg/100µl
- Swiss-Prot No.:** P43405
- All Names:** Spleen tyrosine kinase, PROTEIN-TYROSINE KINASE SYK
- Form of Antibody:** Rabbit IgG in phosphate buffered saline (without Mg^{2+} and Ca^{2+}), pH 7.4, 150mM NaCl, 0.02% sodium azide and 50% glycerol.
- Storage/Stability:** Store at -20°C/1 year
- Immunogen:** The antiserum was produced against synthesized non-phosphopeptide derived from human SYK around the phosphorylation site of tyrosine 348 (E-V-Y-E-S).
- Purification:** The antibody was affinity-purified from rabbit antiserum by affinity-chromatography using epitope-specific immunogen.
- Specificity/Sensitivity:** SYK (Ab-348) antibody detects endogenous levels of total SYK protein.
- Reactivity:** Human, Mouse, Rat
- Applications:** WB: 1:300~1:1000 IHC: 1:50~1:100
ELISA: 1:5000
- References:** Jorgen Schymeinsky, Blood, Dec 2006; 108: 3919 - 3927.
Clément Couture, J. Biol. Chem., Sep 1996; 271: 24294.
Kiyonao Sada, J. Biochem. (Tokyo), Aug 2001; 130: 177 - 186.
Hiroshi Harayama, J Androl, Nov 2005; 26: 732 - 740.
Vincenzo Di Bartolo, J. Biol. Chem., Mar 1999; 274: 6285.



Peptide - +

Immunohistochemical analysis of paraffin-embedded human breast carcinoma tissue using SYK (Ab-348) antibody (#B0091).



Western blot analysis of extracts from K562 cells treated with UV (15mins), using SYK (Ab-348) antibody (#B0091, Line 1 and 2).

For Research Use Only