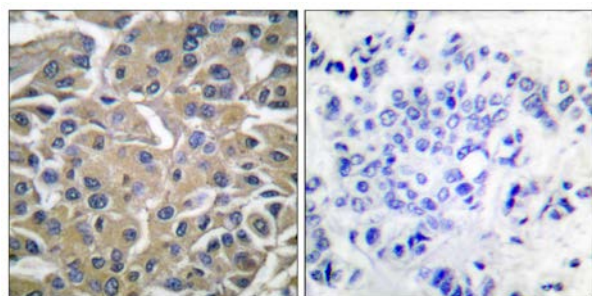




SYK (Phospho-Tyr525) Antibody

E11-0092A

- Catalog Number:** E11-0092A
- Amount:** 100µg/100µl
- Swiss-Prot No. :** P43405
- All Names:** Spleen tyrosine kinase, PROTEIN-TYROSINE KINASE SYK
- All Sites:** Human: Tyr525; Mouse: Tyr519; Rat: Tyr519
- Form of Antibody:** Rabbit IgG in phosphate buffered saline (without Mg^{2+} and Ca^{2+}), pH 7.4, 150mM NaCl, 0.02% sodium azide and 50% glycerol.
- Storage/Stability:** Store at -20°C/1 year
- Immunogen:** The antiserum was produced against synthesized phosphopeptide derived from human SYK around the phosphorylation site of tyrosine 525 (E-N-Y^P-Y-K).
- Purification:** The antibody was affinity-purified from rabbit antiserum by affinity-chromatography using epitope-specific phosphopeptide. The antibody against non-phosphopeptide was removed by chromatography using non-phosphopeptide corresponding to the phosphorylation site.
- Specificity/Sensitivity:** SYK (Phospho-Tyr525) antibody detects endogenous levels of SYK only when phosphorylated at tyrosine 525.
- Reactivity:** Human, Mouse, Rat
- Applications:** WB: 1:500~1000 IHC: 1:50~100
ELISA: 1:20000
- References:** Ludivine Leseux, Blood, Dec 2006; 108: 4156 - 4162.
Carol A. Dangelmaier, Blood, May 2005; 105: 3918 - 3924.
Carol A. Dangelmaier, Blood (ASH Annual Meeting Abstracts), Nov 2004; 104: 627.
Clément Couture, J. Biol. Chem., Sep 1996; 271: 24294.

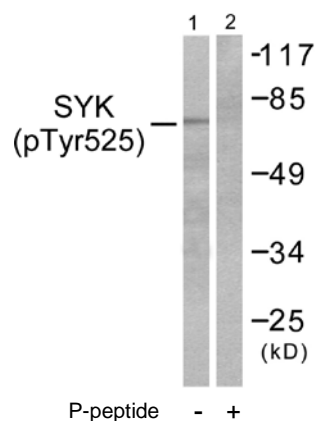


P-peptide

-

+

Immunohistochemical analysis of paraffin-embedded human breast carcinoma tissue, using SYK (Phospho-Tyr525) antibody (#A0092).



P-peptide - +

Western blot analysis of extracts from A549 cells, using SYK (Phospho-Tyr525) antibody (#A0092).

For Research Use Only