



Caspase 3 (cleaved-Asp175) Antibody

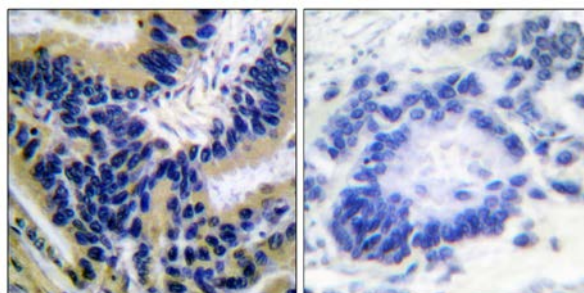
E11-0103L

Catalog Number: E11-0103L**Concentration:** 1mg/ml**Swiss-Prot No.:** P42574**Other Names:** Apopain precursor, CASP-3, CPP-32, CPP32, Caspase-3, Cysteine protease CPP32, ICE3, SCA-1, SREBP cleavage activity 1, Yama protein**Storage/Stability:** Store at -20°C/1 year**Form of Antibody:** Rabbit IgG in phosphate buffered saline (without Mg^{2+} and Ca^{2+}), pH 7.4, 150mM NaCl, 0.02% sodium azide and 50% glycerol.**Immunogen:** The antiserum was produced against synthesized peptide derived from internal of human Caspase 3.**Purification:** The antibody was affinity-purified from rabbit antiserum by affinity-chromatography using epitope-specific immunogen.**Specificity:** Caspase 3 (cleaved-Asp175) antibody detects endogenous levels of fragment of activated Caspase 3 resulting from cleavage adjacent to Asp175.**Reactivity:** Human (Identities = 100%, Positives = 100%)**Applications:** IHC: 1:50~1:100 ELISA: 1:20000**References:**

John K. Jain, Biol Reprod, Aug 2005; 73: 382 - 388.

C.S. Thota, Biol Reprod, Dec 2005; 73: 1191 - 1198.

Koichi Ushizawa, Biol Reprod, Feb 2006; 74: 344 - 351.



Peptide

-

+

Immunohistochemical analysis of paraffin-embedded human lung carcinoma tissue, using Caspase 3 (cleaved-Asp175) antibody.

For Research Use Only