



Caspase 3 (Cleaved-Asp175) Antibody

E11-0104L

Catalog Number: E11-0104L

Amount: 100µg/100µl

Swiss-Prot No. : P42574

All Names: Apopain precursor, CASP-3, CPP-32, CPP32, Caspase-3, Cysteine protease CPP32, ICE3, SCA-1, SREBP cleavage activity 1, Yama protein

All Sites: Human: Asp175; Mouse: Asp175; Rat: Asp175

Form of Antibody: Rabbit IgG in phosphate buffered saline (without Mg^{2+} and Ca^{2+}), pH 7.4, 150mM NaCl, 0.02% sodium azide and 50% glycerol.

Storage/Stability: Store at -20°C/1 year

Immunogen: The antiserum was produced against synthesized peptide derived from human Caspase 3.

Purification: The antibody was affinity-purified from rabbit antiserum by affinity-chromatography using epitope-specific immunogen.

Specificity/Sensitivity: Caspase 3 (cleaved-Asp175) antibody detects endogenous levels of fragment of activated Caspase 3 resulting from cleavage adjacent to Asp175.

Reactivity: Human, Mouse, Rat

Applications: WB: 1:500~1:1000 IHC: 1:50~1:100

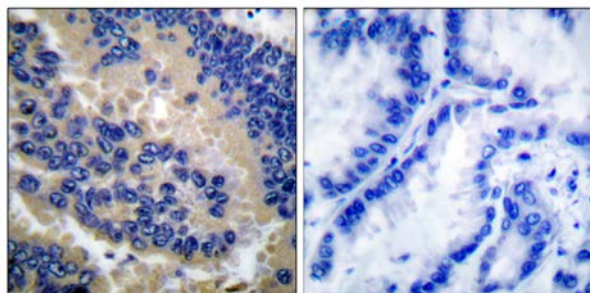
ELISA: 1:20000

References: John K. Jain, Biol Reprod, Aug 2005; 73: 382 - 388.

C.S. Thota, Biol Reprod, Dec 2005; 73: 1191 - 1198.

Koichi Ushizawa, Biol Reprod, Feb 2006; 74: 344 - 351.

ULRICH STEIDL, Ann. N.Y. Acad. Sci., Jun 2005; 1044: 94 - 108.

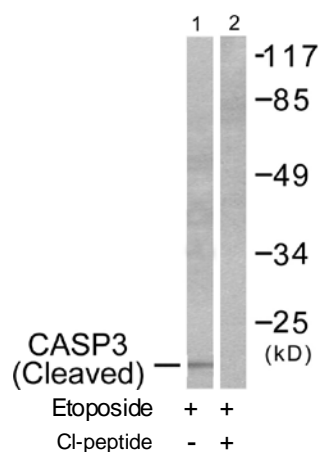


CI-peptide

-

+

Immunohistochemical analysis of paraffin-embedded human lung carcinoma tissue using Caspase 3 (cleaved-Asp175) antibody.



Western blot analysis of extracts from 293 cells, treated with Etoposide (25uM, 60mins), using Caspase 3 (cleaved-Asp175) antibody.

For Research Use Only