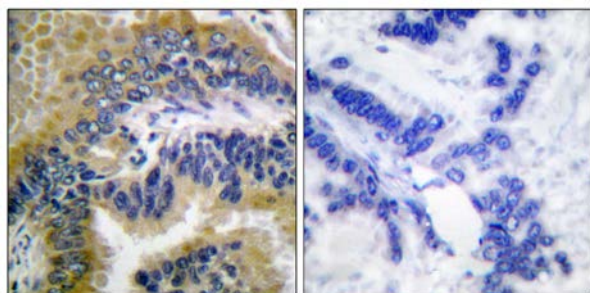




Caspase 3 (Cleaved-Asp175) Antibody

E11-0105L

- Catalog Number:** E11-0105L
- Amount:** 50µg/50µl, 100µg/100µl, 200µg/200µl
- Swiss-Prot No. :** P42574
- All Names:** Apopain precursor, CASP-3, CPP-32, CPP32, Caspase-3, Cysteine protease CPP32, ICE3, SCA-1, SREBP cleavage activity 1, Yama protein
- All Sites:** Human: Asp175
- Form of Antibody:** Rabbit IgG in phosphate buffered saline (without Mg^{2+} and Ca^{2+}), pH 7.4, 150mM NaCl, 0.02% sodium azide and 50% glycerol.
- Storage/Stability:** Store at -20°C/1 year
- Immunogen:** The antiserum was produced against synthesized peptide derived from human Caspase 3.
- Purification:** The antibody was affinity-purified from rabbit antiserum by affinity-chromatography using epitope-specific immunogen.
- Specificity/Sensitivity:** Caspase 3 (cleaved-Asp175) antibody detects endogenous levels of fragment of activated Caspase 3 resulting from cleavage adjacent to Asp175.
- Reactivity:** Human
- Applications:** WB: 1:500~1:1000 IHC: 1:50~1:100
ELISA: 1:20000
- References:** John K. Jain, Biol Reprod, Aug 2005; 73: 382 - 388.
C.S. Thota, Biol Reprod, Dec 2005; 73: 1191 - 1198.
Koichi Ushizawa, Biol Reprod, Feb 2006; 74: 344 - 351.
ULRICH STEIDL, Ann. N.Y. Acad. Sci., Jun 2005; 1044: 94 - 108.

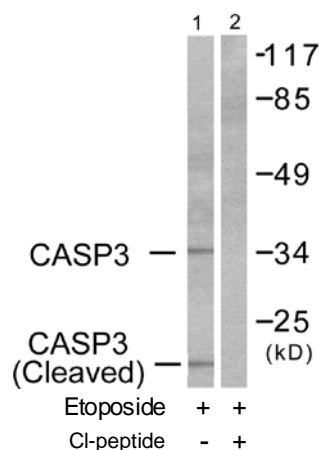


Cl-peptide

-

+

Immunohistochemical analysis of paraffin-embedded human lung carcinoma tissue using Caspase 3 (cleaved-Asp175) antibody.



Western blot analysis of extracts from HeLa/293 cells, treated with Etoposide (25uM, 60mins), using Caspase 3 (cleaved-Asp175) antibody.

For Research Use Only