



Caspase 1 (Cleaved-Asp210) Antibody

E11-0114L

Catalog Number: E11-0114L

Amount: 100µg/100µl

Swiss-Prot No. : P29466

All Names: CASP-1, ICE, IL-1 beta converting enzyme, IL-1BC, IL1BCE, caspase-1, interleukin-1 beta convertase, interleukin-1 beta converting enzyme, p45

All Sites: Human: Asp210

Form of Antibody: Rabbit IgG in phosphate buffered saline (without Mg^{2+} and Ca^{2+}), pH 7.4, 150mM NaCl, 0.02% sodium azide and 50% glycerol.

Storage/Stability: Store at -20°C/1 year

Immunogen: The antiserum was produced against synthesized peptide derived from human Caspase 1.

Purification: The antibody was affinity-purified from rabbit antiserum by affinity-chromatography using epitope-specific immunogen.

Specificity/Sensitivity: Caspase 1 (Cleaved-Asp210) antibody detects endogenous levels of fragment of activated Caspase 1 resulting from cleavage adjacent to Asp210.

Reactivity: Human

Applications: WB: 1:500~1:1000 IHC: 1:50~100

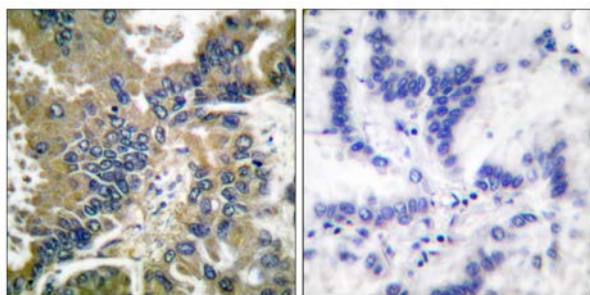
ELISA: 1:10000

References: Victor Elharrar, FASEB J, Mar 2006; 20: A228.

R Matsumura, Ann Rheum Dis, May 2001; 60: 473 - 482.

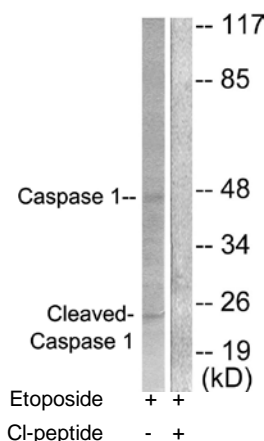
Adriana López Ponte Stem Cells, Mar 2007; 10.1634/stemcells.2007-0054.

A I Catrina, Ann Rheum Dis, Oct 2002; 61: 934 - 936.



Cl-peptide - +

Immunohistochemical analysis of paraffin-embedded human lung carcinoma tissue using Caspase 1 (Cleaved-Asp210) antibody.



Western blot analysis of extracts from NIH/3T3 cells, treated with PMA (25uM, 60mins), using Caspase 1 (Cleaved-Asp210) antibody.

For Research Use Only

For Research Use Only