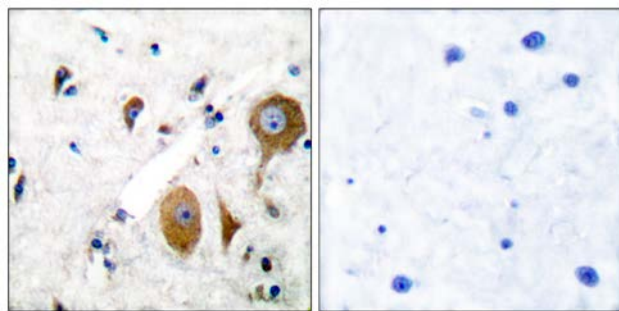




GluR8 Antibody

E11-0212C

Catalog Number:	CE11-0212C
Amount:	100µg/100µl
Swiss-Prot No. :	O00222
All Names:	GPRC1H, MGLUR8, mGlu8, GLUTAMATE RECEPTOR, METABOTROPIC, 8, glutamate receptor, metabotropic 8 precursor
Form of Antibody:	Rabbit IgG in phosphate buffered saline (without Mg ²⁺ and Ca ²⁺), pH 7.4, 150mM NaCl, 0.02% sodium azide and 50% glycerol.
Storage/Stability:	Store at -20°C/1 year
Immunogen:	The antiserum was produced against synthesized peptide derived from human GluR8.
Purification:	The antibody was affinity-purified from rabbit antiserum by affinity-chromatography using epitope-specific immunogen.
Specificity/Sensitivity	GluR8 antibody detects endogenous levels of total GluR8 protein.
Reactivity:	Human, Mouse, Rat
Applications:	WB: 1:100~1:1000 IHC: 1:50~1:100 ELISA: 1:10000
References:	Patrick. M. Downey, J Biomol Screen, Dec 2005; 10: 841 - 848. RJ Wenthold, J. Biol. Chem., Jan 1994; 269: 1332 - 1339. Toshiaki Watanabe, Cancer Res., Oct 2006; 66: 9804 - 9808. V. Bruno, J. Neurosci., Sep 2000; 20: 6413.

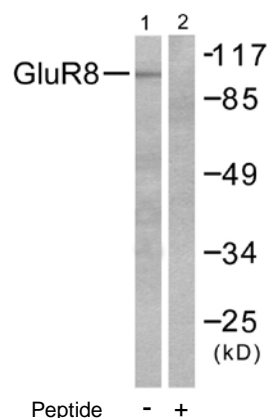


Peptide

-

+

Immunohistochemical analysis of paraffin-embedded human brain tissue using GluR8 antibody (#C0212).



Peptide

-

+

Western blot analysis of extracts from mouse brain, using GluR8 antibody (#C0212).

For Research Use Only