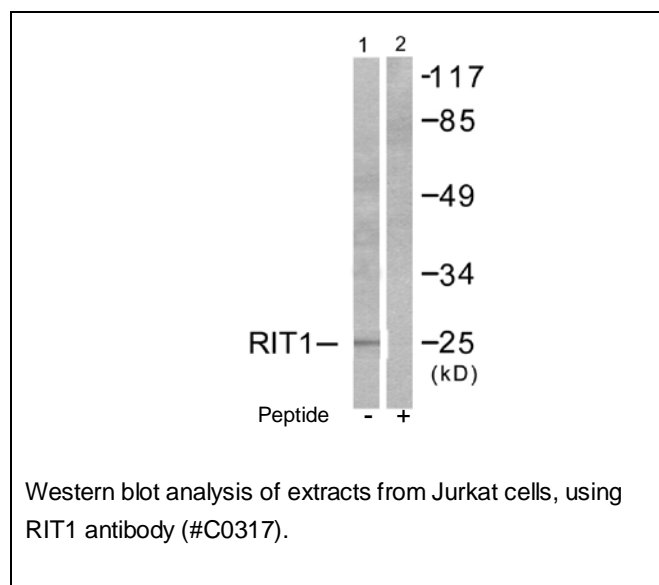




RIT1 Antibody

E11-0317C

- Catalog Number:** E11-0317C
Amount: 100µg/100µl
Swiss-Prot No. : Q92963
All Names: GTP-binding protein Rit1, Ras-like protein expressed in many tissues, Ras-like without CAAX protein 1, RIBB, RIT, ROC1
Form of Antibody: Rabbit IgG in phosphate buffered saline (without Mg²⁺ and Ca²⁺), pH 7.4, 150mM NaCl, 0.02% sodium azide and 50% glycerol.
Storage/Stability: Store at -20°C/1 year
Immunogen: The antiserum was produced against synthesized peptide derived from human RIT1.
Purification: The antibody was affinity-purified from rabbit antiserum by affinity-chromatography using epitope-specific immunogen.
Specificity/Sensitivity RIT1 antibody detects endogenous levels of total RIT1 protein.
Reactivity: Human, Mouse
Applications: WB: 1:500~1:1000 ELISA: 1:10000
References: Manabu Furukawa, Mol. Cell. Biol., Nov 2000; 20: 8185 - 8197.
Angus Chen, J. Biol. Chem., May 2000; 275: 15432.
Kenneth Wu, Mol. Cell. Biol., Feb 2000; 20: 1382 - 1393.
Kenneth Wu, J. Biol. Chem., Jan 2002; 277: 516 - 527.



For Research Use Only