



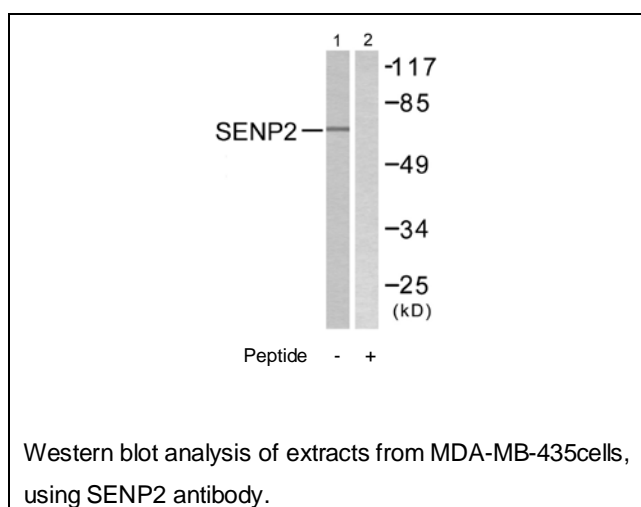
SENP2 Antibody

E11-0366C**Catalog Number:** E11-0366C**Concentration:** 1mg/ml**Swiss-Prot No.:** Q9HC62**Other Names:** Axam2, EC 3.4.22.-, SMT3-specific isopeptidase 2, SUMO1/sentrin/SMT3 specific peptidase 2, Smt3ip2, sentrin-specific protease**Storage/Stability:** Store at -20°C/1 year**Form of Antibody:** Rabbit IgG in phosphate buffered saline (without Mg²⁺ and Ca²⁺), pH 7.4, 150mM NaCl, 0.02% sodium azide and 50% glycerol.**Immunogen:** The antiserum was produced against synthesized peptide derived from Internal of human SENP2.**Purification:** The antibody was affinity-purified from rabbit antiserum by affinity-chromatography using epitope-specific immunogen.**Specificity:** SENP2 antibody detects endogenous levels of total SENP2 protein.**Reactivity:** Human, Mouse, Rat**Applications:** WB: 1:500~1:1000 ELISA: 1:20000**References:**

Yoko Itahana, Mol. Cell. Biol., Jun 2006; 26: 4675 - 4689.

Jinke Cheng, J. Biol. Chem., Apr 2005; 280: 14492 - 14498.

Mark D. Benson, PNAS, Feb 2007; 104: 1805 - 1810.

**For Research Use Only**