



## KLKB1 (heavy chain, Cleaved-Arg390) Antibody

**E11-0367L****Catalog Number:** E11-0367L**Concentration:** 1mg/ml, 100ug/100uL**Swiss-Prot No.:** P03952**Other Names:** EC 3.4.21.34; Fletcher factor; kininogenin; KLK3**Storage/Stability:** Store at -20 °C/1 year**Form of Antibody:** Rabbit IgG in phosphate buffered saline (without Mg<sup>2+</sup> and Ca<sup>2+</sup>), pH 7.4, 150mM NaCl, 0.02% sodium azide and 50% glycerol.**Immunogen:** The antiserum was produced against synthesized peptide derived from human KLKB1.**Purification:** The antibody was affinity-purified from

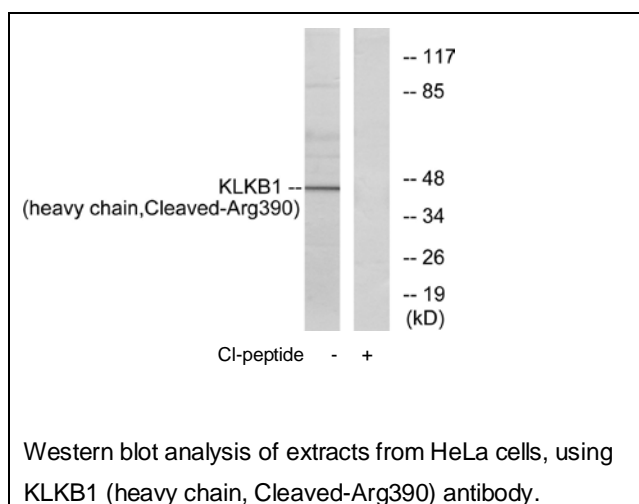
rabbit antiserum by affinity-chromatography using epitope-specific immunogen.

**Specificity:** KLKB1 (heavy chain, Cleaved-Arg390) antibody detects endogenous levels of fragment of activated KLKB1 resulting from cleavage adjacent to Arg390.**Reactivity:** Human**Applications:** WB: 1:500~1:1000 ELISA: 1:10000**References:**

Chung D.W., Biochemistry 25:2410-2417(1986).

Yu H., Genomics 69:225-234(2000).

McMullen B.A., Biochemistry 30:2050-2056(1991).

**For Research Use Only**