



SENP7 Antibody

E11-0370C

Catalog Number: E11-0370C

Concentration: 1mg/ml

Swiss-Prot No.: Q9BQF6

Other Names: Sentrin-specific protease 7, EC 3.4.22.-, Sentrin/SUMO-specific protease SENP7, SUMO-1-specific protease 2, SUMO1/sentrin specific protease 7, KIAA1707, SSP2, SUSP2

Storage/Stability: Store at -20°C/1 year

Form of Antibody: Rabbit IgG in phosphate buffered saline (without Mg²⁺ and Ca²⁺), pH 7.4, 150mM NaCl, 0.02% sodium azide and 50% glycerol.

Immunogen: The antiserum was produced against synthesized peptide derived from Internal of human SENP7.

Purification: The antibody was affinity-purified from

rabbit antiserum by affinity-chromatography using epitope-specific immunogen.

Specificity: SENP7 antibody detects endogenous levels of total SENP7 protein.

Reactivity: Human, Mouse

Applications: WB: 1:500~1:1000 IHC: 1:50~1:100

ELISA: 1:40000

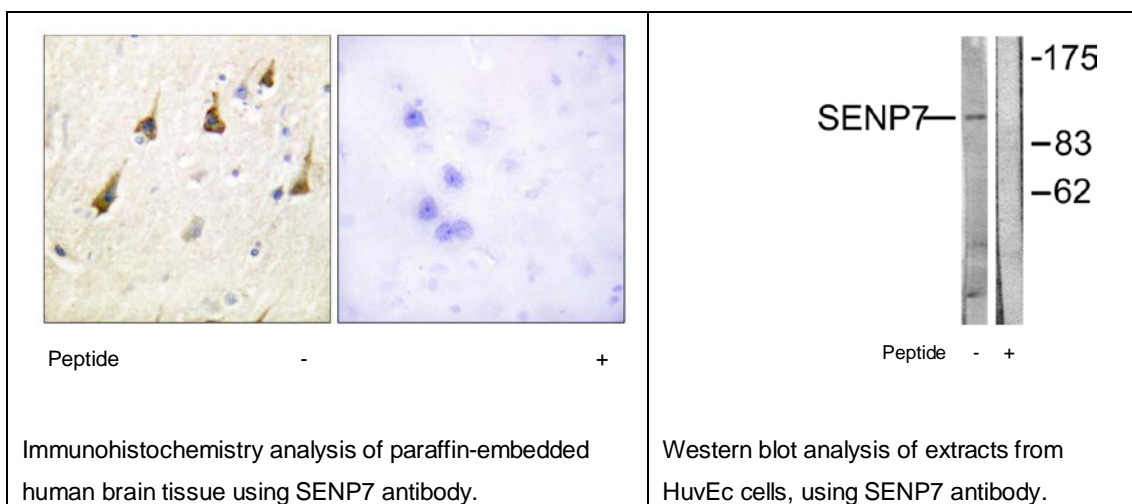
References:

Debaditya Mukhopadhyay, J. Cell Biol., Sep 2006; 174: 939 - 949.

Alessandra Di Bacco, Mol. Cell. Biol., Jun 2006; 26: 4489 - 4498.

Henrik Andersson, J. Med. Microbiol., Aug 2006; 55: 1023 - 1033.

Il-Jin Kim, Carcinogenesis, Mar 2006; 27: 392 - 404.



For Research Use Only