



## TIMP4 Antibody

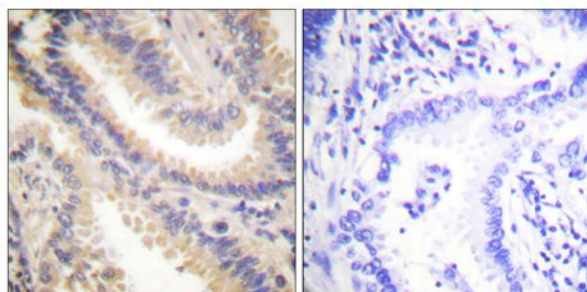
**E11-0374C****Catalog Number:** E11-0374C**Concentration:** 1mg/ml**Swiss-Prot No.:** Q99727**Other Names:** TIMP metalloproteinase inhibitor 4, tissue inhibitor of metalloproteinase 4, Metalloproteinase inhibitor 4**Storage/Stability:** Store at -20°C/1 year**Form of Antibody:** Rabbit IgG in phosphate buffered saline (without  $Mg^{2+}$  and  $Ca^{2+}$ ), pH 7.4, 150mM NaCl, 0.02% sodium azide and 50% glycerol.**Immunogen:** The antiserum was produced against synthesized peptide derived from C-terminal of human TIMP4.**Purification:** The antibody was affinity-purified from rabbit antiserum by affinity-chromatography using epitope-specific immunogen.**Specificity:** TIMP4 antibody detects endogenous levels of total TIMP4 protein.**Reactivity:** Human, Mouse, Rat**Applications:** WB: 1:500~1:1000 IHC: 1:50~1:100  
ELISA: 1:20000**References:**

Jennifer Adjodha, AACR Meeting Abstracts, Apr 2005; 2005: 699.

Kiyoshi Asada, AACR Meeting Abstracts, Apr 2005; 2005: 202.

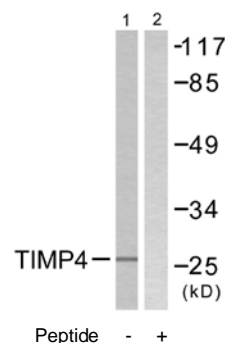
Elaine K Green, J. Med. Genet., Aug 2000; 37: 581.

Jennifer Adjodha, AACR Meeting Abstracts, Apr 2006; 2006: 1028.



Peptide - +

Immunohistochemistry analysis of paraffin-embedded human lung carcinoma tissue using TIMP4 antibody.



Western blot analysis of extracts from NIH/3T3 cells, using TIMP4 antibody.

**For Research Use Only**