



Tubulin β Antibody

E11-0380C

Catalog Number: E11-0380C**Concentration:** 1mg/ml**Swiss-Prot No.:** Q13509**Other Names:** TBB2, TBB5, TUBB, TUBB5, Tubulin beta chain, Tubulin beta-5 chain**Storage/Stability:** Store at -20°C/1 year**Form of Antibody:** Rabbit IgG in phosphate buffered saline (without Mg^{2+} and Ca^{2+}), pH 7.4, 150mM NaCl, 0.02% sodium azide and 50% glycerol.**Immunogen:** The antiserum was produced against synthesized peptide derived from C-terminal of human Tubulin β .**Purification:** The antibody was affinity-purified from

rabbit antiserum by affinity-chromatography using epitope-specific immunogen.

Specificity: Tubulin β antibody detects endogenous levels of total Tubulin β protein.**Reactivity:** Human, Mouse, Rat**Applications:** WB: 1:500~1:1000 IHC: 1:50~1:100

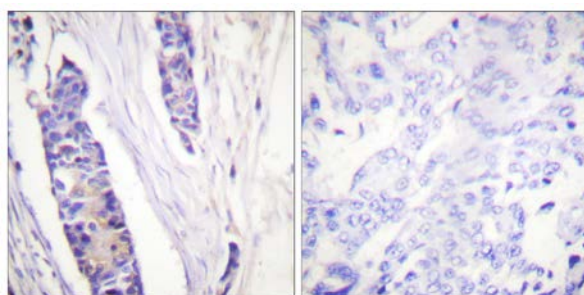
ELISA: 1:5000

References:

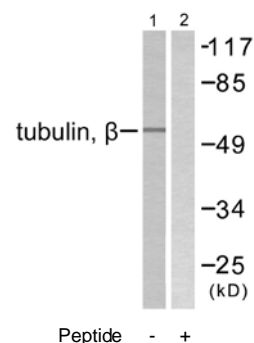
J E Rudolph, Mol. Cell. Biol., Jun 1987; 7: 2231 - 2242.

Jong-Soo Chang, J. Biol. Chem., Feb 2005; 280: 6897 - 6905.

Virginie Redeker, J. Biol. Chem., Jan 2005; 280: 596 - 606.



Immunohistochemistry analysis of paraffin-embedded human breast carcinoma tissue using Tubulin β antibody.



Western blot analysis of extracts from mouse brain cells, using Tubulin β antibody.