



## Ubiquitin Antibody

E11-0385C

**Catalog Number:** E11-0385C

**Concentration:** 1mg/ml

**Swiss-Prot No.:** P62988

**Other Names:** RPS27A, UBA52, UBA80, UBB, UBC, UBCEP1, UBCEP2, bA92K2.2

**Storage/Stability:** Store at -20°C/1 year

**Form of Antibody:** Rabbit IgG in phosphate buffered saline (without  $Mg^{2+}$  and  $Ca^{2+}$ ), pH 7.4, 150mM NaCl, 0.02% sodium azide and 50% glycerol.

**Immunogen:** The antiserum was produced against synthesized peptide derived from Internal of human Ubiquitin.

**Purification:** The antibody was affinity-purified from

rabbit antiserum by affinity-chromatography using epitope-specific immunogen.

**Specificity:** Ubiquitin antibody detects endogenous levels of total ubiquitin protein.

**Reactivity:** Human (Identities = 100%, Positives = 100%);  
Mouse (Identities = 100%, Positives = 100%);  
Rat (Identities = 100%, Positives = 100%)

**Applications:** IHC: 1:50~1:100 ELISA: 1:20000

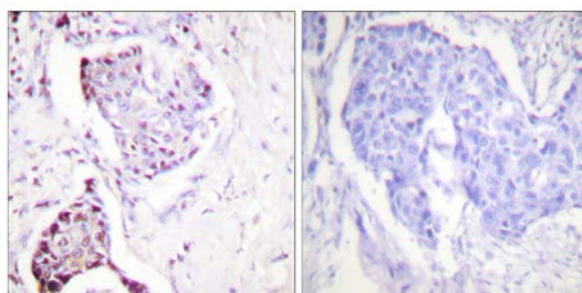
**References:**

John Hanna, Mol. Cell. Biol., Dec 2003; 23: 9251 - 9261.

Matthias Majetschak, Blood, Mar 2003; 101: 1882 - 1890.

Fu Shang, J. Biol. Chem., May 2005; 280: 20365 - 20374.

Joerg Herrmann, Circ. Res., May 2007; 100: 1276 - 1291.



Peptide - +

Immunohistochemistry analysis of paraffin-embedded human breast carcinoma tissue, using Ubiquitin antibody.

**For Research Use Only**