



XPA Antibody

E11-0393C

Catalog Number: E11-0393C

Concentration: 1mg/ml

Swiss-Prot No.: P23025

Other Names: DNA-repair protein complementing XP-A cells, XPAC, Xeroderma pigmentosum group A complementing protein

Storage/Stability: Store at -20°C/1 year

Form of Antibody: Rabbit IgG in phosphate buffered saline (without Mg^{2+} and Ca^{2+}), pH 7.4, 150mM NaCl, 0.02% sodium azide and 50% glycerol.

Immunogen: The antiserum was produced against synthesized peptide derived from Internal of human XPA.

Purification: The antibody was affinity-purified from

rabbit antiserum by affinity-chromatography using epitope-specific immunogen.

Specificity: XPA antibody detects endogenous levels of total XPA protein.

Reactivity: Human, Mouse

Applications: WB: 1:500~1:1000 IHC: 1:50~1:100

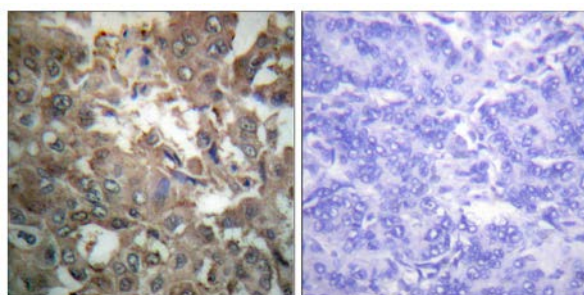
ELISA: 1:5000

References:

Gary W. Daughdrill, Nucleic Acids Res., Jul 2003; 31: 4176 - 4183.

Esther M. Hoogervorst, Carcinogenesis, Mar 2003; 24: 613 - 619.

Karen M. Vasquez, PNAS, Apr 2002; 99: 5848.

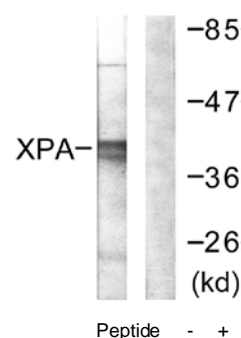


Peptide

-

+

Immunohistochemistry analysis of paraffin-embedded human breast carcinoma tissue using XPA antibody.



XPA-

Peptide - +

Western blot analysis of extracts from COLO205 cells, using XPA antibody.

For Research Use Only