



XRCC1 Antibody

E11-0395C

Catalog Number: E11-0395C

Concentration: 1mg/ml

Swiss-Prot No.: P18887

Other Names: DNA-repair protein XRCC1, XRC1

Storage/Stability: Store at -20°C/1 year

Form of Antibody: Rabbit IgG in phosphate buffered saline (without Mg^{2+} and Ca^{2+}), pH 7.4, 150mM NaCl, 0.02% sodium azide and 50% glycerol.

Immunogen: The antiserum was produced against synthesized peptide derived from Internal of human XRCC1.

Purification: The antibody was affinity-purified from rabbit antiserum by affinity-chromatography using

epitope-specific immunogen.

Specificity: XRCC1 antibody detects endogenous levels of total XRCC1 protein.

Reactivity: Human, Mouse, Rat

Applications: WB: 1:500~1:1000 IHC: 1:50~1:100
ELISA: 1:10000

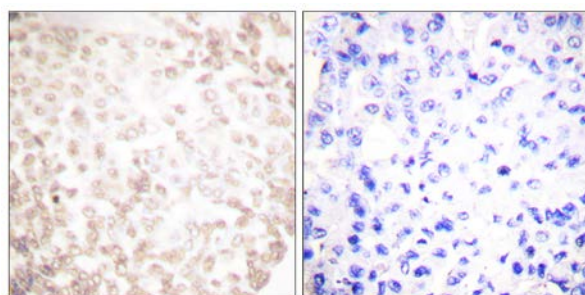
References:

Ming-Whei Yu, J Natl Cancer Inst, Oct 2003; 95: 1485 - 1488.

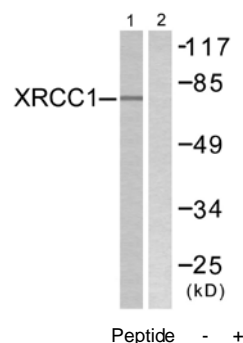
Nicolas Lévy, Nucleic Acids Res., Jan 2006; 34: 32 - 41.

Claire Seedhouse, Blood, Nov 2002; 100: 3761 - 3766.

Eric J. Duell, Cancer Res., Aug 2002; 62: 4630 - 4636.



Immunohistochemistry analysis of paraffin-embedded human lung carcinoma tissue using XRCC1 antibody.



Western blot analysis of extracts from Jurkat cells, using XRCC1 antibody.

For Research Use Only