



XRCC3 Antibody

E11-0397C

Catalog Number: E11-0397C

Concentration: 1mg/ml

Swiss-Prot No.: O43542

Other Names: X-RAY REPAIR CROSS-COMPLEMENTING PROTEIN 3, X-RAY REPAIR, COMPLEMENTING DEFECTIVE IN CHINESE HAMSTER 3

Storage/Stability: Store at -20°C/1 year

Form of Antibody: Rabbit IgG in phosphate buffered saline (without Mg^{2+} and Ca^{2+}), pH 7.4, 150mM NaCl, 0.02% sodium azide and 50% glycerol.

Immunogen: The antiserum was produced against synthesized peptide derived from Internal of human XRCC3.

Purification: The antibody was affinity-purified from rabbit antiserum by affinity-chromatography using

epitope-specific immunogen.

Specificity: XRCC3 antibody detects endogenous levels of total XRCC3 protein.

Reactivity: Human

Applications: WB: 1:500~1:1000 IHC: 1:50~1:100
ELISA: 1:5000

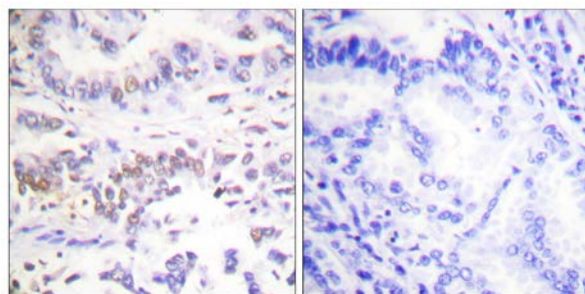
References:

Hitoshi Kurumizaka, Nucleic Acids Res., Jul 2003; 31: 4041 - 4050.

Anna Renglin Lindh, Hum. Mol. Genet., Apr 2006; 15: 1217 - 1224.

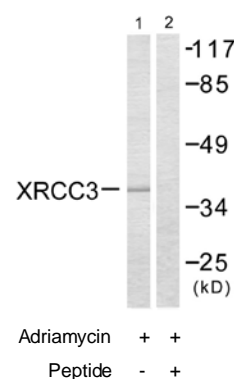
Zhi-Yuan Xu, J. Pharmacol. Exp. Ther., Aug 2005; 314: 495 - 505.

Nazumi Alice Yamada, J. Biol. Chem., May 2004; 279: 23250 - 23254.



Peptide - +

Immunohistochemistry analysis of paraffin-embedded human lung carcinoma tissue using XRCC3 antibody.



Western blot analysis of extracts from HepG2 cells, treated with Adriamycin (0.5uM, 5hours), using XRCC3 antibody.

For Research Use Only