



XRCC6 Antibody

E11-0400C

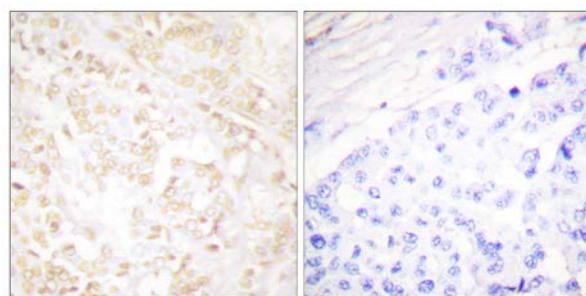
Catalog Number: E11-0400C**Concentration:** 1mg/ml**Swiss-Prot No.:** P12956**Other Names:** 70 kDa subunit of Ku antigen, ATP-dependent DNA helicase II, 70 kDa subunit, CTC box binding factor 75 kDa subunit, CTC75, CTCBF, G22P1, Lupus Ku autoantigen protein p70, TLAA, Thyroid-lupus autoantigen**Storage/Stability:** Store at -20°C/1 year**Form of Antibody:** Rabbit IgG in phosphate buffered saline (without Mg^{2+} and Ca^{2+}), pH 7.4, 150mM NaCl, 0.02% sodium azide and 50% glycerol.**Immunogen:** The antiserum was produced against synthesized peptide derived from C-terminal of human XRCC6.**Purification:** The antibody was affinity-purified from rabbit antiserum by affinity-chromatography using epitope-specific immunogen.**Specificity:** XRCC6 antibody detects endogenous levels of total XRCC6 protein.**Reactivity:** Human, Mouse**Applications:** WB: 1:500~1:1000 IHC: 1:50~1:100
ELISA: 1:5000**References:**

Yanhong Liu, Carcinogenesis, Mar 2007; 10.1093.

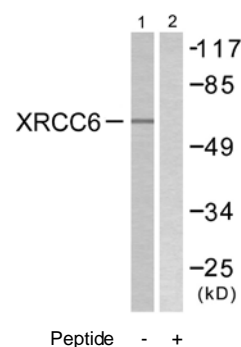
Erich M. Sturgis, Arch Otolaryngol Head Neck Surg, Feb 1999; 125: 185.

Yansong Gu, PNAS, Jul 1997; 94: 8076.

Kyoung-Mu Lee, Clin. Cancer Res., Jun 2005; 11: 4620 - 4626.



Immunohistochemistry analysis of paraffin-embedded human breast carcinoma tissue using XRCC6 antibody.



Western blot analysis of extracts from K562 cells, using XRCC6 antibody.

For Research Use Only