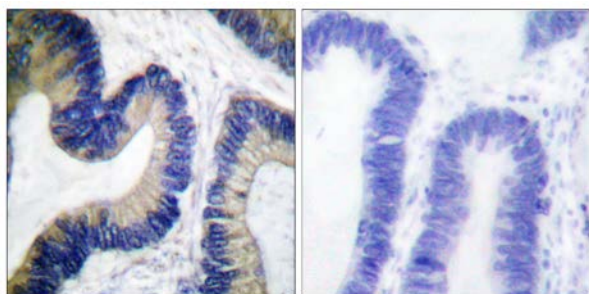




4E-BP1 (Phospho-Ser64) Antibody

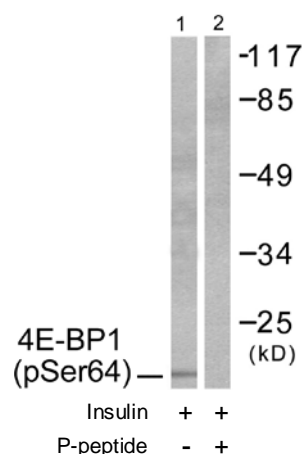
E11-0401A

- Catalog Number:** E11-0401A
- Amount:** 100µg/100µl
- Swiss-Prot No. :** Q13541
- All Names:** 4EBP1, EIF4EBP1, Eukaryotic translation initiation factor 4E binding protein 1, Insulin-stimulated EIF-4E binding protein PHAS-I, P/OKCL6, PHAS-1, PHAS-I
- All Sites:** Human: Ser64; Mouse: Ser63; Rat: Ser63
- Form of Antibody:** Rabbit IgG in phosphate buffered saline (without Mg^{2+} and Ca^{2+}), pH 7.4, 150mM NaCl, 0.02% sodium azide and 50% glycerol.
- Storage/Stability:** Store at -20°C/1 year
- Immunogen:** The antiserum was produced against synthesized phosphopeptide derived from human 4E-BP1 around the phosphorylation site of serine 64 (R-N-S^P-P-V).
- Purification:** The antibody was affinity-purified from rabbit antiserum by affinity-chromatography using epitope-specific phosphopeptide. The antibody against non-phosphopeptide was removed by chromatography using non-phosphopeptide corresponding to the phosphorylation site.
- Specificity/Sensitivity:** 4E-BP1 (Phospho-Ser64) antibody detects endogenous levels of 4E-BP1 only when phosphorylated at serine 64.
- Reactivity:** Human, Mouse, Rat
- Applications:** WB: 1:500~1:1000 IHC: 1:50~1:100
ELISA: 1:1000
- References:** Anne-Claude Gingras, Genes & Dev., Jun 1999; 13: 1422.
Guangming Liu, J. Biol. Chem., Mar 2002; 277: 8810 - 8816.
Ya-Ping Jiang, J. Biol. Chem., Mar 2001; 276: 10943 - 10951.
Anne-Claude Gingras, Genes & Dev., Feb 1998; 12: 502.



P-peptide - +

Immunohistochemical analysis of paraffin-embedded human colon carcinoma tissue using 4E-BP1 (Phospho-Ser64) antibody (#A0401).



Western blot analysis of extracts from Jurkat cells, treated with Insulin (0.01U/ml, 15mins), using 4E-BP1 (Phospho-Ser64) antibody (#A0401).

For Research Use Only