



## 4E-BP1 (Ab-64) Antibody

E11-0401B

**Catalog Number:** E11-0401B

**Concentration:** 1mg/ml

**Swiss-Prot No.:** Q13541

**Other Names:** 4EBP1, EIF4EBP1, Eukaryotic translation initiation factor 4E binding protein 1, Insulin-stimulated EIF-4E binding protein PHAS-I, P/OKCL6, PHAS-1, PHAS-I

**Storage/Stability:** Store at -20°C/1 year

**Form of Antibody:** Rabbit IgG in phosphate buffered saline (without  $Mg^{2+}$  and  $Ca^{2+}$ ), pH 7.4, 150mM NaCl, 0.02% sodium azide and 50% glycerol.

**Immunogen:** The antiserum was produced against synthesized non-phosphopeptide derived from human 4E-BP1 around the phosphorylation site of serine 65 (R-N-S<sup>P</sup>-P-V).

**Purification:** The antibody was affinity-purified from rabbit antiserum by affinity-chromatography using epitope-specific immunogen.

**Specificity:** 4E-BP1 (Ab-64) antibody detects endogenous levels of total 4E-BP1 protein.

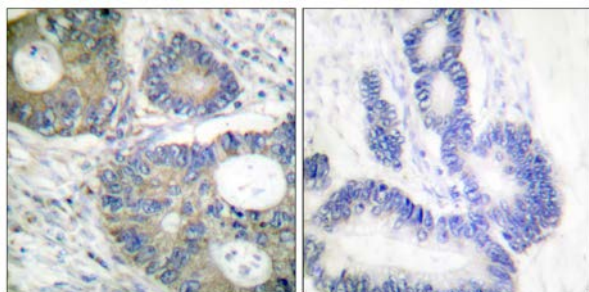
**Reactivity:** Human, Mouse, Rat

**Applications:** WB: 1:500~1:1000 IHC: 1:50~1:100  
ELISA: 1:5000

**References:**

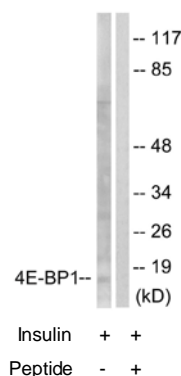
Anne-Claude Gingras, Genes & Dev., Jun 1999; 13: 1422.  
Guangming Liu, J. Biol. Chem., Mar 2002; 277: 8810 - 8816.

Ya-Ping Jiang, J. Biol. Chem., Mar 2001; 276: 10943 - 10951.



Peptide - +

Immunohistochemical analysis of paraffin-embedded human colon carcinoma tissue using 4E-BP1 (Ab-64) antibody.



Western blot analysis of extracts from Jurkat cells, treated with Insulin (0.01U/ml, 15mins), using 4E-BP1 (Ab-64) antibody.

**For Research Use Only**