



4E-BP1 (Phospho-Thr69) Antibody

E11-0402A

Catalog Number: E11-0402A

Concentration: 1mg/ml

Swiss-Prot No.: Q14674

Other Names: Caspase-like protein ESPL1, EC 3.4.22.49, ESP1, ESPL1, Extra spindle poles-like 1 protein, KIAA0165, Separin

All Sites: Human: Ser801; Mouse: Ser1189

Storage/Stability: Store at -20 °C/1 year

Form of Antibody: Rabbit IgG in phosphate buffered saline (without Mg^{2+} and Ca^{2+}), pH 7.4, 150mM NaCl, 0.02% sodium azide and 50% glycerol.

Immunogen: The antiserum was produced against synthesized phosphopeptide derived from human SEPARASE around the phosphorylation site of serine 801 (N-S-S^P-P-V).

Purification: The antibody was affinity-purified from rabbit antiserum by affinity-chromatography using epitope-specific phosphopeptide. The antibody against non-phosphopeptide was removed by chromatography using non-phosphopeptide corresponding to the phosphorylation site.

Specificity: SEPARASE (Phospho-Ser801) antibody detects endogenous levels of SEPARASE only when phosphorylated at serine 801.

Reactivity: Human, Mouse

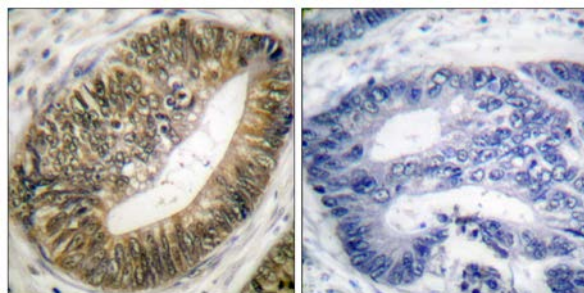
Applications: WB: 1:500~1:1000 IHC: 1:50~1:100 IF: 1:100~1:500 ELISA: 1:40000

References:

[Waizenegger I., Curr. Biol. 12:1368-1378\(2002\).](#)

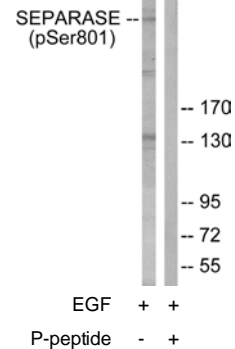
[Nagase T., DNA Res. 3:17-24\(1996\).](#)

[Zou H., Science 285:418-422\(1999\).](#)

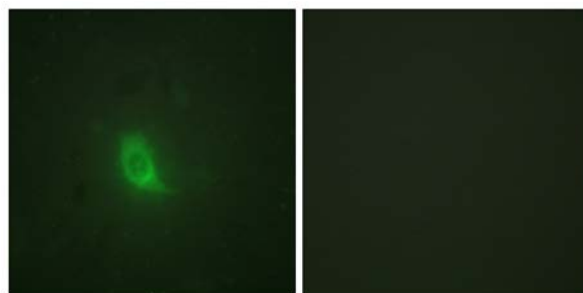


P-peptide - +

Immunohistochemistry analysis of paraffin-embedded human colon carcinoma tissue using SEPARASE (Phospho-Ser801) antibody.



Western blot analysis of extracts from 293 cells, treated with EGF (200ng/ml, 30mins), using SEPARASE (Phospho-Ser801) antibody.



P-peptide - +

Immunofluorescence analysis of HuvEc cells, using SEPARASE (Phospho-Ser801) antibody.