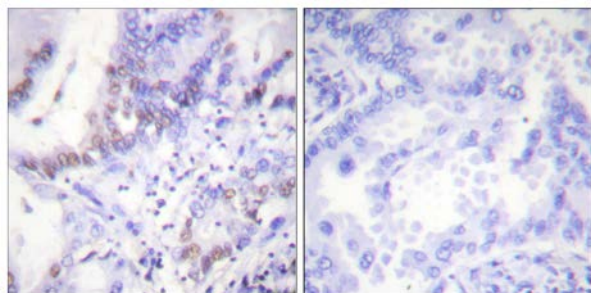




Abl (Phospho-Tyr412) Antibody

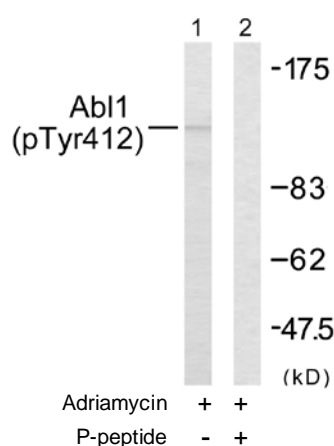
E11-0403A

- Catalog Number:** E11-0403A
- Amount:** 100µg/100µl
- Swiss-Prot No. :** P00519
- All Names:** ABL1, EC 2.7.1.112, JTK7, Proto-oncogene tyrosine-protein kinase ABL1, c-ABL, p150
- All Sites:** Human: Tyr412; Mouse: Tyr412; Rat: Tyr412
- Form of Antibody:** Rabbit IgG in phosphate buffered saline (without Mg^{2+} and Ca^{2+}), pH 7.4, 150mM NaCl, 0.02% sodium azide and 50% glycerol.
- Storage/Stability:** Store at -20°C/1 year
- Immunogen:** The antiserum was produced against synthesized phosphopeptide derived from human Abl1 around the phosphorylation site of tyrosine 412 (D-T-Y^P-T-A).
- Purification:** The antibody was affinity-purified from rabbit antiserum by affinity-chromatography using epitope-specific phosphopeptide. The antibody against non-phosphopeptide was removed by chromatography using non-phosphopeptide corresponding to the phosphorylation site.
- Specificity/Sensitivity:** Abl (Phospho-Tyr412) Antibody detects endogenous levels of Abl1 only when phosphorylated at tyrosine 412.
- Reactivity:** Human, Mouse, Rat
- Applications:** WB: 1:500~1:1000 IHC: 1:50~100
ELISA: 1:5000
- References:** Fotis A. Asimakopoulos, Blood, Oct 1999; 94: 2452 - 2460.
Thomas Burmeister, Blood, Nov 2006; 108: 3556 - 3559.
Kim De Keersmaecker, Blood, Jun 2005; 105: 4849 - 4852.
Florian Klein, J. Exp. Med., Mar 2004; 199: 673.



P-peptide - +

Immunohistochemical analysis of paraffin-embedded human lung carcinoma tissue using Abl (Phospho-Tyr412) Antibody (#A0403).



Western blot analysis of extracts from COS7 cells, treated with Adriamycin (0.5ug/ml, 24 hours), using Abl (Phospho-Tyr412) Antibody (#A0403).

For Research Use Only