



## Abl (Ab-204) Antibody

**E11-0404B****Catalog Number:** E11-0404B**Concentration:** 1mg/ml**Swiss-Prot No.:** P00519**Other Names:** ABL1, EC 2.7.1.112, JTK7,

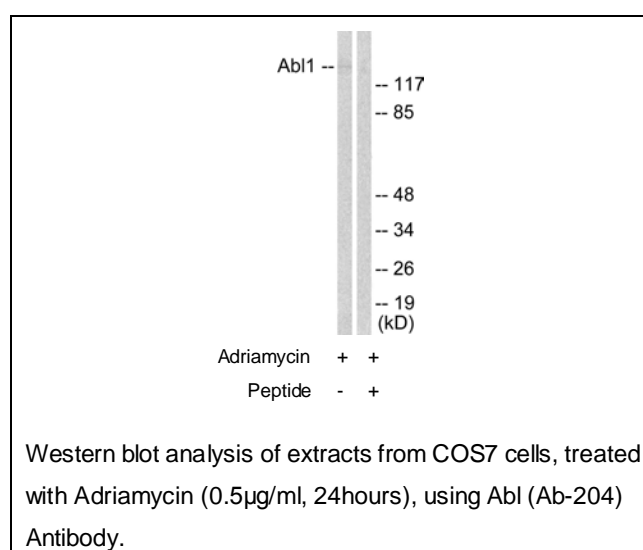
Proto-oncogene tyrosine-protein kinase ABL1, c-ABL, p150

**Storage/Stability:** Store at -20°C/1 year**Form of Antibody:** Rabbit IgG in phosphate buffered saline (without  $Mg^{2+}$  and  $Ca^{2+}$ ), pH 7.4, 150mM NaCl, 0.02% sodium azide and 50% glycerol.**Immunogen:** The antiserum was produced against synthesized non-phosphopeptide derived from human Abl around the phosphorylation site of tyrosine 204(K-L-Y<sup>P</sup>-V-S).**Purification:** The antibody was affinity-purified from rabbit antiserum by affinity-chromatography using epitope-specific immunogen.**Specificity:** Abl (Ab-204) antibody detects endogenous levels of total Abl protein.**Reactivity:** Human, Mouse, Rat**Applications:** WB: 1:500~1:1000 ELISA: 1:5000**References:**

Fotis A. Asimakopoulos, Blood, Oct 1999; 94: 2452 - 2460.

Thomas Burmeister, Blood, Nov 2006; 108: 3556 - 3559.

Kim De Keersmaecker, Blood, Jun 2005; 105: 4849 - 4852.

**For Research Use Only**