



Akt (Phospho-Thr450) Antibody

E11-0406A

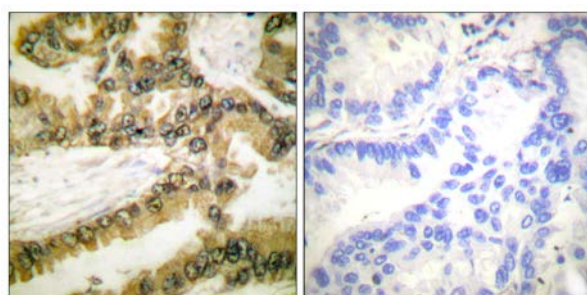
Catalog Number: E11-0406A**Concentration:** 1mg/ml**Swiss-Prot No.:** P31749**Other Names:** AKT, AKT1 kinase, C-AKT, PKB, PKB-alpha, Protein kinase B, RAC, RAC-PK-alpha, RAC-alpha serine/threonine kinase, kinase Akt1**All Sites:** Human: Thr450; Mouse: Thr450; Rat: Thr450**Storage/Stability:** Store at -20°C/1 year**Form of Antibody:** Rabbit IgG in phosphate buffered saline (without Mg^{2+} and Ca^{2+}), pH 7.4, 150mM NaCl, 0.02% sodium azide and 50% glycerol.**Immunogen:** The antiserum was produced against synthesized phosphopeptide derived from human AKT1 around the phosphorylation site of threonine 450 (T-I-T^P-P-P).**Purification:** The antibody was affinity-purified from rabbit antiserum by affinity-chromatography using epitope-specific phosphopeptide. The antibody against non-phosphopeptide was removed by chromatography using non-phosphopeptide corresponding to the phosphorylation site.**Specificity:** Akt (Phospho-Thr450) antibody detects endogenous levels of AKT1 only when phosphorylated at threonine 450.**Reactivity:** Human, Mouse, Rat**Applications:** WB: 1:500~1:1000 IHC: 1:50~1:100 ELISA: 1:1000**References:**

Payaningal R. Somanath, J. Biol. Chem., Jun 2007; 10.1074.

Xiaoming Ju, PNAS, May 2007; 104: 7438 - 7443.

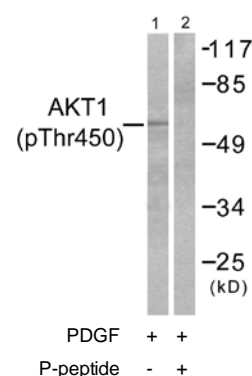
Brian DeBosch, Circulation, May 2006; 113: 2097 - 2104.

Guilhem Desbrosses, J. Exp. Bot., Feb 2003; 54: 781 - 788.



P-peptide - +

Immunohistochemistry analysis of paraffin-embedded human lung carcinoma tissue using Akt (Phospho-Thr450) antibody.



Western blot analysis of extracts from NIH/3T3 cells, treated with PDGF (50ng/ml, 20mins), using Akt (Phospho-Thr450) antibody.

For Research Use Only