



## Akt (Phospho-Ser124) Antibody

E11-0407A

**Catalog Number:** E11-0407A

**Concentration:** 1mg/ml

**Swiss-Prot No.:** P31749

**Other Names:** AKT, AKT1 kinase, C-AKT, PKB, PKB-alpha, Protein kinase B, RAC, RAC-PK-alpha, RAC-alpha serine/threonine kinase, kinase Akt1

**All Sites:** Human: Ser124; Mouse: Ser124; Rat: Ser124

**Storage/Stability:** Store at -20 °C/1 year

**Form of Antibody:** Rabbit IgG in phosphate buffered saline (without  $Mg^{2+}$  and  $Ca^{2+}$ ), pH 7.4, 150mM NaCl, 0.02% sodium azide and 50% glycerol.

**Immunogen:** The antiserum was produced against synthesized phosphopeptide derived from human Akt around the phosphorylation site of serine 124 (S-G-S<sup>P</sup>-P-S).

**Purification:** The antibody was affinity-purified from rabbit antiserum by affinity-chromatography using epitope-specific phosphopeptide. The antibody against non-phosphopeptide was removed by chromatography using non-phosphopeptide corresponding to the phosphorylation site.

**Specificity:** Akt (Phospho-Ser124) antibody detects endogenous levels of Akt only when phosphorylated at serine 124.

**Reactivity:** Human, Mouse, Rat

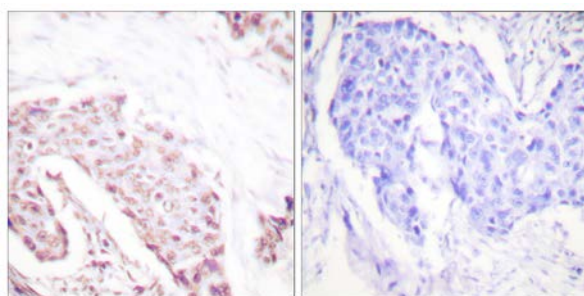
**Applications:** WB: 1:500~1:1000 IHC: 1:50~1:100 ELISA: 1:5000

**References:**

Payaningal R. Somanath, J. Biol. Chem., Jun 2007; 10.1074.

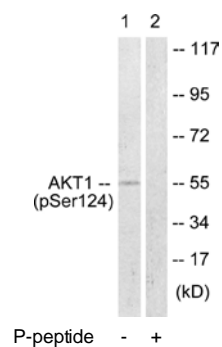
Xiaoming Ju, PNAS, May 2007; 104: 7438 - 7443.

Brian DeBosch, Circulation, May 2006; 113: 2097 - 2104.



P-peptide - +

Immunohistochemistry analysis of paraffin-embedded human breast carcinoma tissue using Akt (Phospho-Ser124) antibody.



P-peptide - +

Western blot analysis of extracts from mouse brain cells, using Akt (Phospho-Ser124) antibody.