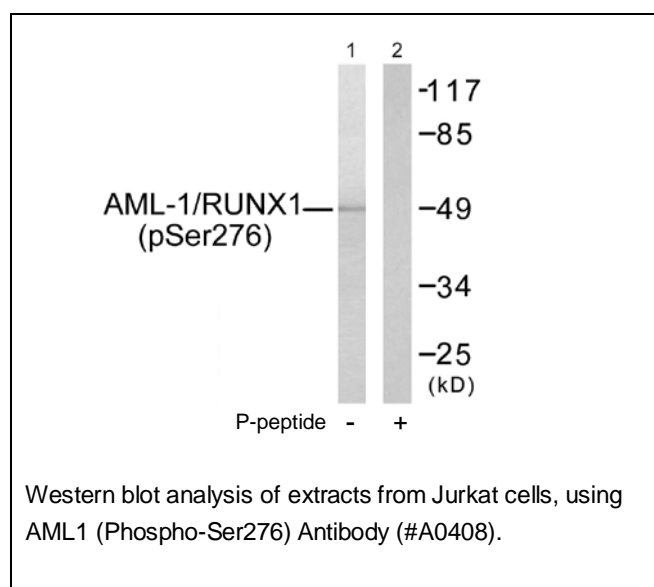




## AML1 (Phospho-Ser276) Antibody

E11-0408A

- Catalog Number:** E11-0408A  
**Amount:** 100µg/100µl  
**Swiss-Prot No. :** Q01196  
**All Names:** Acute myeloid leukemia 1 protein, CBF-alpha 2, CBFA2, Core-binding factor, alpha 2 subunit, Oncogene AML-1, PEA2-alpha B, PEBP2-alpha B, Polyomavirus enhancer binding protein 2 alpha B subunit, RUN1, RUNX1, Runt-related transcription factor 1, SL3-3 enhancer factor 1 alpha B subunit, SL3/AKV core-binding factor alpha B subunit  
**All Sites:** Human: ser276; Mouse: Ser249  
**Form of Antibody:** Rabbit IgG in phosphate buffered saline (without  $Mg^{2+}$  and  $Ca^{2+}$ ), pH 7.4, 150mM NaCl, 0.02% sodium azide and 50% glycerol.  
**Storage/Stability:** Store at -20°C/1 year  
**Immunogen:** The antiserum was produced against synthesized phosphopeptide derived from human AML-1 around the phosphorylation site of serine 276 (Q-P-S<sup>P</sup>-P-P).  
**Purification:** The antibody was affinity-purified from rabbit antiserum by affinity-chromatography using epitope-specific phosphopeptide. The antibody against non-phosphopeptide was removed by chromatography using non-phosphopeptide corresponding to the phosphorylation site.  
**Specificity/Sensitivity:** AML1 (Phospho-Ser276) Antibody detects endogenous levels of AML-1 only when phosphorylated at serine 276.  
**Reactivity:** Human, Mouse  
**Applications:** WB: 1:500~1:1000      ELISA: 1:5000  
**References:** S Meyers, Mol. Cell. Biol., Oct 1993; 13: 6336 - 6345.  
Chaitali Banerjee, PNAS, May 1996; 93: 4968.  
Jennifer J. Westendorf, Mol. Cell. Biol., Jan 1998; 18: 322 - 333.  
Ari Melnick, Blood, Dec 2000; 96: 3939 - 3947.



**For Research Use Only**