



ATF1 (Phospho-Ser63) Antibody

E11-0411A

Catalog Number: E11-0411A

Concentration: 1mg/ml

Swiss-Prot No.: P18846

Other Names: Activating transcription factor 1; ATF1; Cyclic-AMP-dependent transcription factor ATF-1; TCR-ATF1; TREB36 protein

All Sites: Human: Ser63; Mouse: Ser63

Storage/Stability: Store at -20 °C/1 year

Form of Antibody: Rabbit IgG in phosphate buffered saline (without Mg^{2+} and Ca^{2+}), pH 7.4, 150mM NaCl, 0.02% sodium azide and 50% glycerol.

Immunogen: The antiserum was produced against synthesized phosphopeptide derived from human ATF1 around the phosphorylation site of serine 63 (R-P-S^P-Y-R).

Purification: The antibody was affinity-purified from rabbit antiserum by affinity-chromatography using epitope-specific phosphopeptide. The antibody against non-phosphopeptide was removed by chromatography using non-phosphopeptide corresponding to the phosphorylation site.

Specificity: ATF1 (Phospho-Ser63) antibody detects endogenous levels of ATF1 only when phosphorylated at serine 63.

Reactivity: Human (Identities = 100%, Positives = 100%); Mouse (Identities = 100%, Positives = 100%)

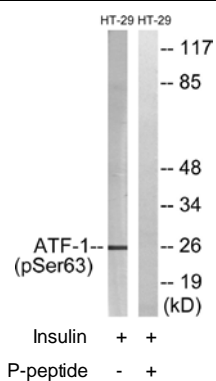
Applications: WB: 1:500~1:1000 ELISA: 1:5000

References:

Yoshimura T., EMBO J. 9:2537-2542(1990).

Rehfuss R.P., J. Biol. Chem. 266:18431-18434(1991).

Hai T., Genes Dev. 3:2083-2090(1989).



Western blot analysis of extracts from HT-29 cells, treated with Insulin (0.01U/ML, 15mins), using ATF1 (Phospho-Ser63) antibody.