



ATF1 (Ab-63) Antibody

E11-0411B

Catalog Number: E11-0411B

Concentration: 1mg/ml

Swiss-Prot No.: P18846

Other Names: Activating transcription factor 1; ATF1;
Cyclic-AMP-dependent transcription factor ATF-1;
TCR-ATF1; TREB36 protein

Storage/Stability: Store at -20°C/1 year

Form of Antibody: Rabbit IgG in phosphate buffered saline (without Mg^{2+} and Ca^{2+}), pH 7.4, 150mM NaCl, 0.02% sodium azide and 50% glycerol.

Immunogen: The antiserum was produced against synthesized non-phosphopeptide derived from human ATF1 around the phosphorylation site of serine 63 (R-P-S^P-Y-R).

Purification: The antibody was affinity-purified from rabbit antiserum by affinity-chromatography using epitope-specific immunogen.

Specificity: ATF1 (Ab-63) antibody detects endogenous levels of total ATF1 protein.

Reactivity: Human (Identities = 100%, Positives = 100%);
Mouse (Identities = 100%, Positives = 100%)

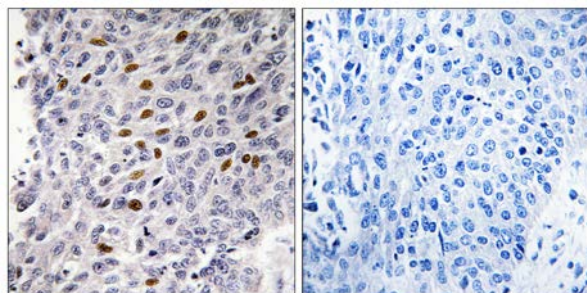
Applications: WB: 1:500~1:1000 IHC: 1:50~1:100
ELISA: 1:1000

References:

Yoshimura T., EMBO J. 9:2537-2542(1990).

Rehfuss R.P., J. Biol. Chem. 266:18431-18434(1991).

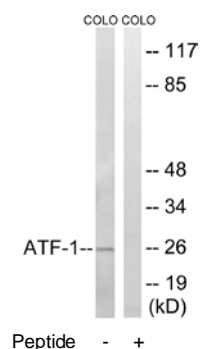
Hai T., Genes Dev. 3:2083-2090(1989).



Peptide -

+

Immunohistochemistry analysis of paraffin-embedded human lung carcinoma tissue using ATF1 (Ab-63) antibody.



Peptide -

+

Western blot analysis of extracts from COLO cells, using ATF1 (Ab-63) antibody.

For Research Use Only