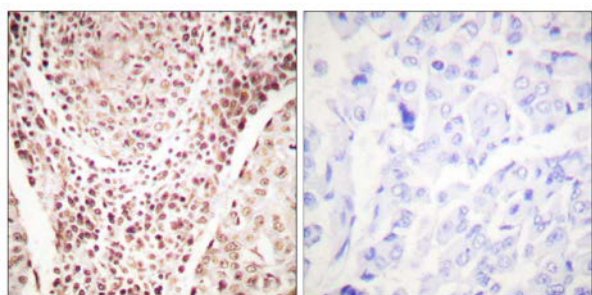




Chk2 (Phospho-Thr387) Antibody

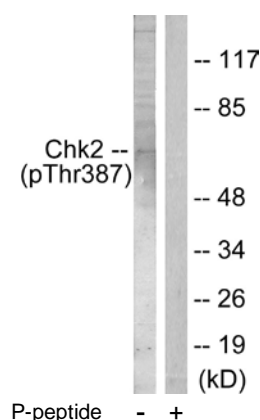
E11-0414A

- Catalog Number:** E11-0414A
- Amount:** 100µg/100µl
- Swiss-Prot No. :** O96017
- All Names:** CHEK2, CHK2, Cds1, Chk2, RAD53, kinase Chk2
- All Sites:** Human: Thr387; Mouse: Thr391; Rat: Thr390
- Form of Antibody:** Rabbit IgG in phosphate buffered saline (without Mg^{2+} and Ca^{2+}), pH 7.4, 150mM NaCl, 0.02% sodium azide and 50% glycerol.
- Storage/Stability:** Store at -20°C/1 year
- Immunogen:** The antiserum was produced against synthesized phosphopeptide derived from human Chk2 around the phosphorylation site of threonine 387 (C-G-T^P-P-T).
- Purification:** The antibody was affinity-purified from rabbit antiserum by affinity-chromatography using epitope-specific phosphopeptide. The antibody against non-phosphopeptide was removed by chromatography using non-phosphopeptide corresponding to the phosphorylation site.
- Specificity/Sensitivity:** Chk2 (Phospho-Thr387) antibody detects endogenous levels of Chk2 only when phosphorylated at threonine 387.
- Reactivity:** Human, Mouse, Rat
- Applications:** WB: 1:500~1:1000 IHC: 1:50~100
ELISA: 1:5000
- References:** Atsushi Hirao, Mol. Cell. Biol., Sep 2002; 22: 6521 - 6532.
Julie K. Schwarz, Mol. Cancer Res., Jun 2003; 1: 598.
Shutong Yang, J. Biol. Chem., Sep 2006; 281: 26645 - 26654.
Xingzhi Xu, Mol. Cell. Biol., Jun 2002; 22: 4419 - 4432.



P-peptide - +

Immunohistochemical analysis of paraffin-embedded human breast carcinoma tissue using Chk2 (Phospho-Thr387) Antibody (#A0414).



Western blot analysis of extracts from Jurkat cells, using Chk2 (Phospho-Thr387) Antibody (#A0414).

For Research Use Only