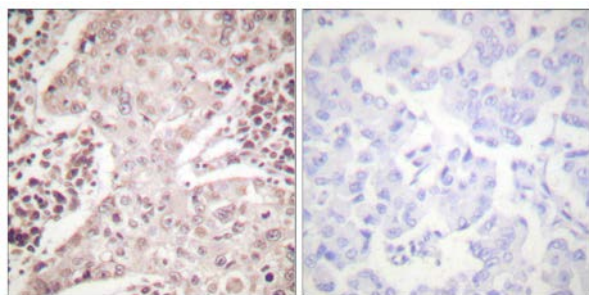




## Chk2 (Ab-387) Antibody

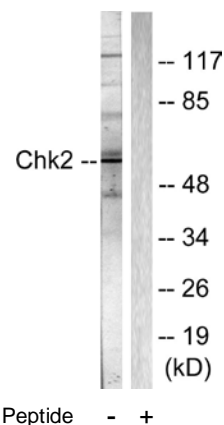
E11-0414B

- Catalog Number:** E11-0414B
- Amount:** 100µg/100µl
- Swiss-Prot No.:** O96017
- All Names:** CHEK2, CHK2, Cds1, Chk2, RAD53, kinase Chk2
- Form of Antibody:** Rabbit IgG in phosphate buffered saline (without  $Mg^{2+}$  and  $Ca^{2+}$ ), pH 7.4, 150mM NaCl, 0.02% sodium azide and 50% glycerol.
- Storage/Stability:** Store at -20°C/1 year
- Immunogen:** The antiserum was produced against synthesized non-phosphopeptide derived from human Chk2 around the phosphorylation site of threonine 387 (C-G-T-P-T).
- Purification:** The antibody was affinity-purified from rabbit antiserum by affinity-chromatography using epitope-specific immunogen.
- Specificity/Sensitivity:** Chk2 (Ab-387) antibody detects endogenous levels of total Chk2 protein.
- Reactivity:** Human, Mouse, Rat
- Applications:** WB: 1:500~1:1000      IHC: 1:50~1:100  
ELISA: 1:5000
- References:** Atsushi Hirao, Mol. Cell. Biol., Sep 2002; 22: 6521 - 6532.  
Julie K. Schwarz, Mol. Cancer Res., Jun 2003; 1: 598.  
Shutong Yang, J. Biol. Chem., Sep 2006; 281: 26645 - 26654.  
Xingzhi Xu, Mol. Cell. Biol., Jun 2002; 22: 4419 - 4432.



Peptide                      -                      +

Immunohistochemical analysis of paraffin-embedded human breast carcinoma tissue using Chk2 (Ab-387) Antibody (#B0414).



Western blot analysis of extracts from Jurkat cells, using Chk2 (Ab-387) Antibody (#B0414).

**For Research Use Only**