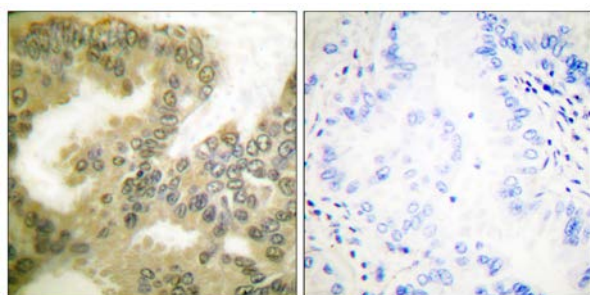




## Cyclin D3 (Phospho-Thr283) Antibody

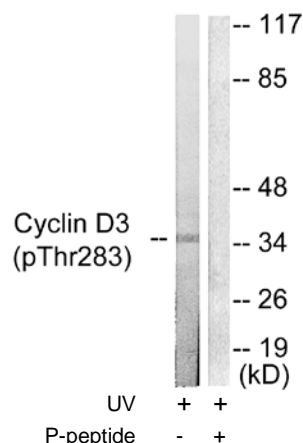
E11-0418A

- Catalog Number:** E11-0418A
- Amount:** 100µg/100µl
- Swiss-Prot No. :** P30281
- All Names:** CCND3, CGD3, Cyl-3, G1/S-specific cyclin D3
- All Sites:** Human: Thr283; Mouse: Thr283; Rat: Thr284
- Form of Antibody:** Rabbit IgG in phosphate buffered saline (without  $Mg^{2+}$  and  $Ca^{2+}$ ), pH 7.4, 150mM NaCl, 0.02% sodium azide and 50% glycerol.
- Storage/Stability:** Store at -20°C/1 year
- Immunogen:** The antiserum was produced against synthesized phosphopeptide derived from human Cyclin D3 around the phosphorylation site of threonine 283 (T-S-T<sup>P</sup>-P-T).
- Purification:** The antibody was affinity-purified from rabbit antiserum by affinity-chromatography using epitope-specific phosphopeptide. The antibody against non-phosphopeptide was removed by chromatography using non-phosphopeptide corresponding to the phosphorylation site.
- Specificity/Sensitivity:** Cyclin D3 (Phospho-Thr283) antibody detects endogenous levels of Cyclin D3 only when phosphorylated at threonine 283.
- Reactivity:** Human, Mouse, Rat
- Applications:** WB: 1:500~1000      IHC: 1:50~1:100  
ELISA: 1:1000
- References:** Guo-Li Wang, Mol. Cell. Biol., Apr 2006; 26: 2570 - 2582.  
Feng Dong, Mol. Biol. Cell, Aug 1998; 9: 2081.  
Tapan Kumar Bagui, Mol. Cell. Biol., Dec 2000; 20: 8748 - 8757.  
David A. Sarruf, Mol. Cell. Biol., Nov 2005; 25: 9985 - 9995.



P-peptide                      -                      +

Immunohistochemical analysis of paraffin-embedded human lung carcinoma tissue using Cyclin D3 (Phospho-Thr283) Antibody (#A0418).



Western blot analysis of extracts from K562 cells treated with UV (5mins), using Cyclin D3 (Phospho-Thr283) Antibody (#A0418).

**For Research Use Only**