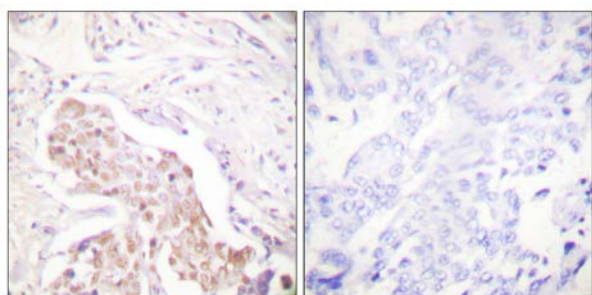




## FANCD2 (Phospho-Ser222) Antibody

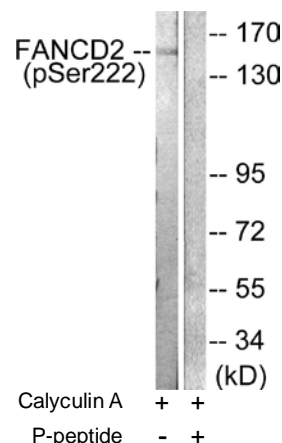
E11-0427A

- Catalog Number:** E11-0427A
- Amount:** 100µg/100µl
- Swiss-Prot No. :** Q9BXW9
- All Names:** FACD2, FANCD2, Fanconi anemia complementation group D2 protein
- All Sites:** Human: Ser222
- Form of Antibody:** Rabbit IgG in phosphate buffered saline (without  $Mg^{2+}$  and  $Ca^{2+}$ ), pH 7.4, 150mM NaCl, 0.02% sodium azide and 50% glycerol.
- Storage/Stability:** Store at -20°C/1 year
- Immunogen:** The antiserum was produced against synthesized phosphopeptide derived from human FANCD2 around the phosphorylation site of serine 222 (G-D-S<sup>P</sup>-Q-H).
- Purification:** The antibody was affinity-purified from rabbit antiserum by affinity-chromatography using epitope-specific phosphopeptide. The antibody against non-phosphopeptide was removed by chromatography using non-phosphopeptide corresponding to the phosphorylation site.
- Specificity/Sensitivity:** FANCD2 (Phospho-Ser222) antibody detects endogenous levels of FANCD2 only when phosphorylated at serine 222.
- Reactivity:** Human
- Applications:** WB: 1:500~1:1000      IHC: 1:50~1:100  
ELISA: 1:1000
- References:** Shobbir Hussain, Hum. Mol. Genet., Jun 2004; 13: 1241 - 1248.  
Rocio Montes de Oca, Blood, Feb 2005; 105: 1003 - 1009.  
XiaoZhe Wang, Mol. Cell. Biol., Jul 2004; 24: 5850 - 5862.  
Gary P. H. Ho, Mol. Cell. Biol., Sep 2006; 26: 7005 - 7015.



P-peptide                      -                      +

Immunohistochemical analysis of paraffin-embedded human lung carcinoma tissue using FANCD2 (Phospho-Ser222) antibody (#A0427).



Western blot analysis of extracts from HT-29 cells, treated with Calyculin A (50ng/ml, 30mins), using FANCD2 (Phospho-Ser222) antibody (#A0427).

**For Research Use Only**