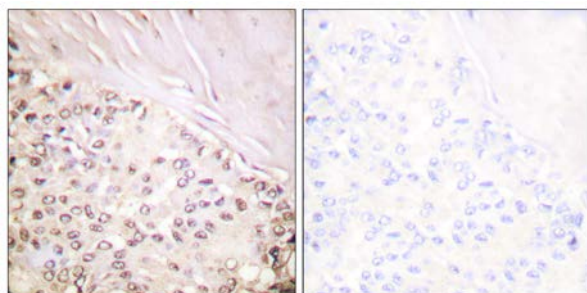




FANCD2 (Ab-222)

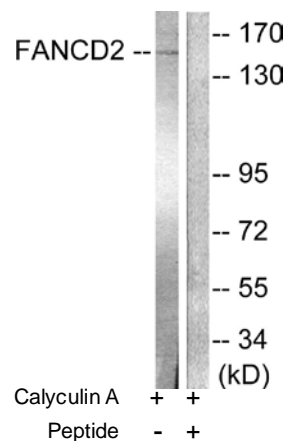
E11-0427B

- Catalog Number:** E11-0427B
- Amount:** 100µg/100µl
- Swiss-Prot No.:** Q9BXW9
- All Names:** FACD2, FANCD2, Fanconi anemia complementation group D2 protein
- Form of Antibody:** Rabbit IgG in phosphate buffered saline (without Mg^{2+} and Ca^{2+}), pH 7.4, 150mM NaCl, 0.02% sodium azide and 50% glycerol.
- Storage/Stability:** Store at -20°C/1 year
- Immunogen:** The antiserum was produced against synthesized non-phosphopeptide derived from human FANCD2 around the phosphorylation site of serine 222 (G-D-S-Q-H).
- Purification:** The antibody was affinity-purified from rabbit antiserum by affinity-chromatography using epitope-specific immunogen.
- Specificity/Sensitivity:** FANCD2 (Ab-222) antibody detects endogenous levels of total FANCD2 protein.
- Reactivity:** Human
- Applications:** WB: 1:500~1:1000 IHC: 1:50~1:100
ELISA: 1:10000
- References:** Shobbir Hussain, Hum. Mol. Genet., Jun 2004; 13: 1241 - 1248.
Rocio Montes de Oca, Blood, Feb 2005; 105: 1003 - 1009.
XiaoZhe Wang, Mol. Cell. Biol., Jul 2004; 24: 5850 - 5862.
Gary P. H. Ho, Mol. Cell. Biol., Sep 2006; 26: 7005 - 7015.



Peptide - +

Immunohistochemical analysis of paraffin-embedded human breast carcinoma tissue using FANCD2 (Ab-222) antibody (#B0427).



Western blot analysis of extracts from HT-29 cells, treated with Calyculin A (50ng/ml, 30mins), using FANCD2 (Ab-222) antibody (#B0427).

For Research Use Only