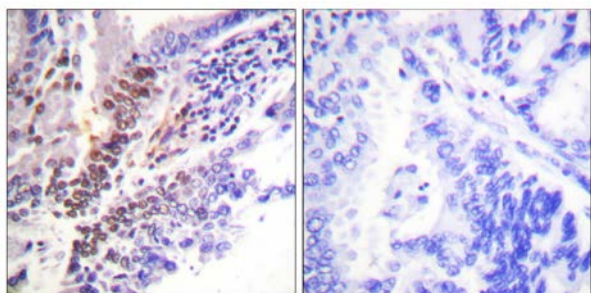




GR (Phospho-Ser226) Antibody

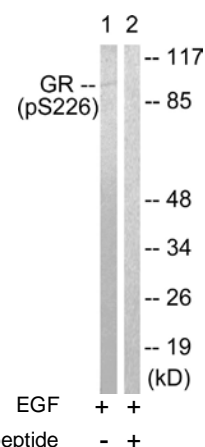
E11-0432A

- Catalog Number:** E11-0432A
- Amount:** 100µg/100µl
- Swiss-Prot No.:** P04150
- All Names:** GCR, GRL, GRL1, NR3C1, glucocorticoid receptor
- All Sites:** Human: Ser226; Mouse: Ser234; Rat: Ser246
- Form of Antibody:** Rabbit IgG in phosphate buffered saline (without Mg^{2+} and Ca^{2+}), pH 7.4, 150mM NaCl, 0.02% sodium azide and 50% glycerol.
- Storage/Stability:** Store at -20°C/1 year
- Immunogen:** The antiserum was produced against synthesized phosphopeptide derived from human GR around the phosphorylation site of serine 226 (L-L-S^P-P-L).
- Purification:** The antibody was affinity-purified from rabbit antiserum by affinity-chromatography using epitope-specific phosphopeptide. The antibody against non-phosphopeptide was removed by chromatography using non-phosphopeptide corresponding to the phosphorylation site.
- Specificity/Sensitivity:** GR (Phospho-Ser226) antibody detects endogenous levels of GR only when phosphorylated at serine 226.
- Reactivity:** Human, Mouse, Rat
- Applications:** WB: 1:500~1:1000 IHC: 1:50~1:100
ELISA: 1:5000
- References:** Kyung Jin Kwak, J. Exp. Bot., Nov 2005; 56: 3007 - 3016.
Maite de Llanos, Hum. Reprod., Jan 2005; 20: 216 - 220.
M. Lynch, Mol. Hum. Reprod., Jul 2005; 11: 507 - 512.
Valeriya P. Makarenkova, J. Immunol., Feb 2006; 176: 2085 - 2094.



P-peptide - +

Immunohistochemical analysis of paraffin-embedded human lung carcinoma tissue using GR (Phospho-Ser226) antibody (#A0432).



Western blot analysis of extracts from Jurkat cells, treated with EGF (200ng/ml, 15mins), using GR (Phospho-Ser226) antibody (#A0432).

For Research Use Only