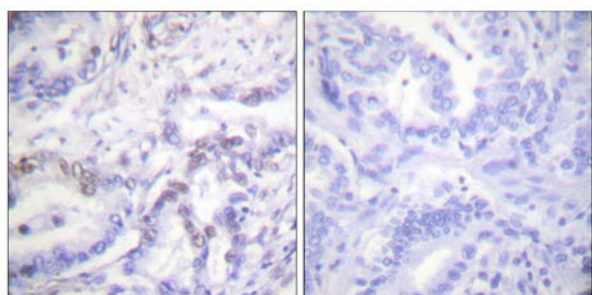




## Histone H3 (Phospho-Thr3) Antibody

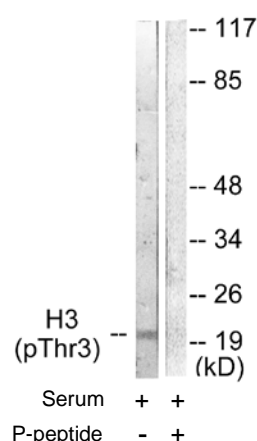
E11-0434A

- Catalog Number:** E11-0434A
- Amount:** 100µg/100µl
- Swiss-Prot No. :** P68431
- All Names:** H3/a, H3/c, H3/d, H3/f, H3/h, H3/i, H3/j, H3/k, H3/l, HIST1H3A, histone H3.1
- All Sites:** Human: Thr3; Mouse: Thr3; Rat: Thr4
- Form of Antibody:** Rabbit IgG in phosphate buffered saline (without Mg<sup>2+</sup> and Ca<sup>2+</sup>), pH 7.4, 150mM NaCl, 0.02% sodium azide and 50% glycerol.
- Storage/Stability:** Store at -20°C/1 year
- Immunogen:** The antiserum was produced against synthesized phosphopeptide derived from human Histone H3 around the phosphorylation site of threonine 3 (A-R-T<sup>P</sup>-K-Q).
- Purification:** The antibody was affinity-purified from rabbit antiserum by affinity-chromatography using epitope-specific phosphopeptide. The antibody against non-phosphopeptide was removed by chromatography using non-phosphopeptide corresponding to the phosphorylation site.
- Specificity/Sensitivity:** Histone H3 (Phospho-Thr3) antibody detects endogenous levels of Histone H3 only when phosphorylated at threonine 3.
- Reactivity:** Human, Mouse, Rat
- Applications:** WB: 1:500~1:1000      IHC: 1:50~1:100  
ELISA: 1:1000
- References:** N Chodchoy, Mol. Cell. Biol., Mar 1987; 7: 1039 - 1047.  
Tomoko HAYASHI, J. Biochem. (Tokyo), Jun 1984; 95: 1741 - 1749.  
Scott C. Galasinski, J. Biol. Chem., Jan 2002; 277: 2579 - 2588.  
Sandra B. Hake, J. Biol. Chem., Jan 2006; 281: 559 - 568.



P-peptide                      -                      +

Immunohistochemical analysis of paraffin-embedded human lung carcinoma tissue using Histone H3 (Phospho-Thr3) antibody (#A0434).



Western blot analysis of extracts from HuvEc cells, treated with Serum (20%, 30mins), using Histone H3 (Phospho-Thr3) antibody (#A0434).

**For Research Use Only**