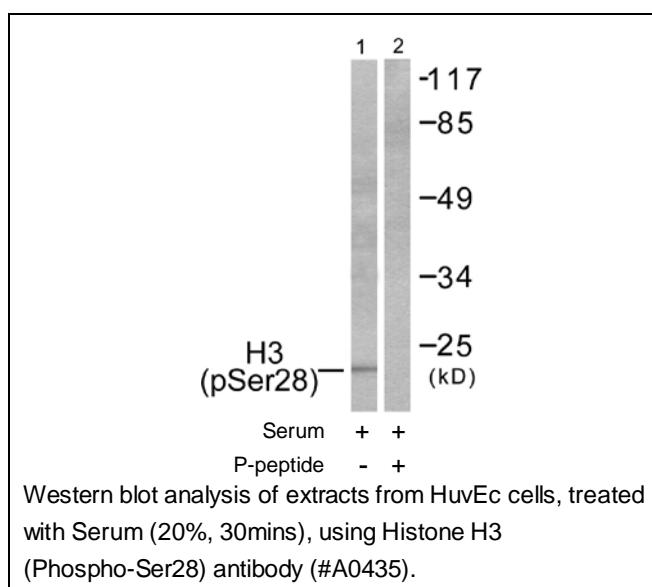




Histone H3 (Phospho-Ser28) Antibody

E11-0435A

- Catalog Number:** E11-0435A
- Amount:** 100µg/100µl
- Swiss-Prot No. :** P68431
- All Names:** H3/a, H3/c, H3/d, H3/f, H3/h, H3/i, H3/j, H3/k, H3/l, HIST1H3A, histone H3.1
- All Sites:** Human: Ser28; Mouse: Ser28; Rat: Ser29
- Form of Antibody:** Rabbit IgG in phosphate buffered saline (without Mg^{2+} and Ca^{2+}), pH 7.4, 150mM NaCl, 0.02% sodium azide and 50% glycerol.
- Storage/Stability:** Store at -20 °C/1 year
- Immunogen:** The antiserum was produced against synthesized phosphopeptide derived from human Histone H3 around the phosphorylation site of serine 28 (R-K-S^P-A-P).
- Purification:** The antibody was affinity-purified from rabbit antiserum by affinity-chromatography using epitope-specific phosphopeptide. The antibody against non-phosphopeptide was removed by chromatography using non-phosphopeptide corresponding to the phosphorylation site.
- Specificity/Sensitivity:** Histone H3 (Phospho-Ser28) antibody detects endogenous levels of Histone H3 only when phosphorylated at serine 28.
- Reactivity:** Human, Mouse, Rat
- Applications:** WB: 1:500~1:1000 ELISA: 1:1000
- References:** N Chodchoy, Mol. Cell. Biol., Mar 1987; 7: 1039 - 1047.
Tomoko HAYASHI, J. Biochem. (Tokyo), Jun 1984; 95: 1741 - 1749.
Scott C. Galasinski, J. Biol. Chem., Jan 2002; 277: 2579 - 2588.
Sandra B. Hake, J. Biol. Chem., Jan 2006; 281: 559 - 568.



For Research Use Only