

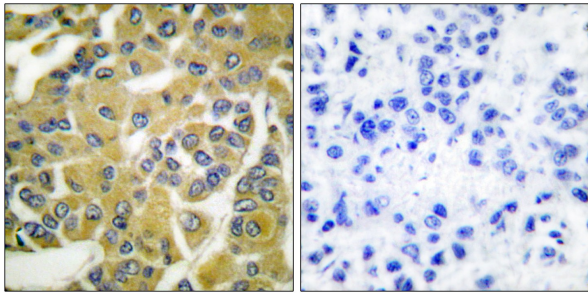


IKK- β (Phospho-Tyr188) Antibody

E11-0442A

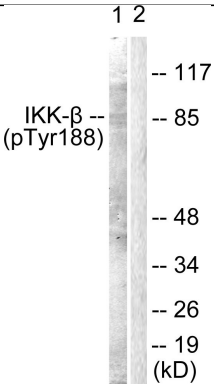
- Catalog Number:** E11-0442A
- Amount:** 100 μ g/100 μ l
- Swiss-Prot No. :** O14920
- All Names:** EC 2.7.11.10, I-kappa-B kinase 2, I-kappa-B-kinase beta, IKK-B, IKK-beta, IKK2, IKKB, IkbKB, NFKB1KB, Nuclear factor NF-kappa-B inhibitor kinase beta, kinase IKK-beta
- All Sites:** Human:Tyr188 ; Mouse: Tyr188 ; Rat: Tyr188
- Form of Antibody:** Rabbit IgG in phosphate buffered saline (without Mg²⁺ and Ca²⁺), pH 7.4, 150mM NaCl, 0.02% sodium azide and 50% glycerol.
- Storage/Stability:** Store at -20°C/1 year
- Immunogen:** The antiserum was produced against synthesized phosphopeptide derived from human IKK- β around the phosphorylation site of tyrosine 188 (L-Q-Y^P-L-A).
- Purification:** The antibody was affinity-purified from rabbit antiserum by affinity-chromatography using epitope-specific phosphopeptide. The antibody against non-phosphopeptide was removed by chromatography using non-phosphopeptide corresponding to the phosphorylation site.
- Specificity/Sensitivity:** IKK- β (Phospho-Tyr188) antibody detects endogenous levels of IKK- β only when phosphorylated at tyrosine 188.
- Reactivity:** Human, Mouse, Rat
- Applications:** WB: 1:500~1:1000 IHC: 1:50~1:100
ELISA: 1:1000
- References:** Kelly M. Regula, J. Biol. Chem., Oct 2002; 277: 38676 - 38682.
Wen-Hui Hu, J. Biol. Chem., Aug 2005; 280: 29233 - 29241.
Irina V. Budunova, AACR Meeting Abstracts, Mar 2004; 2004: 1056.
Fan Yang, J. Immunol., Jun 2003; 170: 5630.

For Research Use Only



P-peptide - +

Immunohistochemical analysis of paraffin-embedded human breast carcinoma tissue using IKK- β (Phospho-Tyr188) antibody (#A0442).



P-peptide - +

Western blot analysis of extracts from COS7 cells, using IKK- β (Phospho-Tyr188) antibody (#A0442).