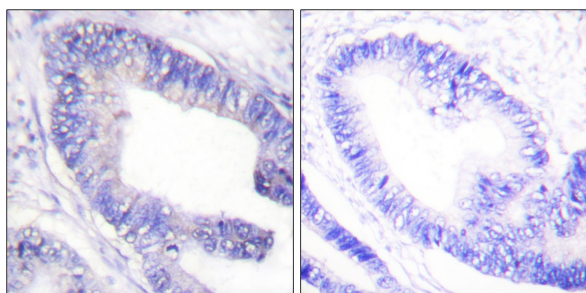




## IRS-1 (Phospho-Ser1101) Antibody

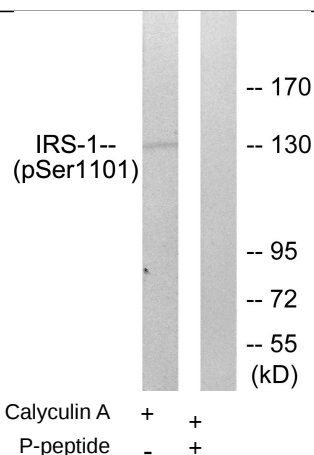
E11-0446A

- Catalog Number:** E11-0446A
- Amount:** 100µg/100µl
- Swiss-Prot No. :** P35568
- All Names:** IRS-1, IRS1, Insulin receptor substrate-1
- All Sites:** Human: Ser1101; Mouse: Ser1097; Rat: Ser1100
- Form of Antibody:** Rabbit IgG in phosphate buffered saline (without  $Mg^{2+}$  and  $Ca^{2+}$ ), pH 7.4, 150mM NaCl, 0.02% sodium azide and 50% glycerol.
- Storage/Stability:** Store at -20°C/1 year
- Immunogen:** The antiserum was produced against synthesized phosphopeptide derived from human IRS-1 around the phosphorylation site of serine 1101 (H-S-S<sup>P</sup>-E-T).
- Purification:** The antibody was affinity-purified from rabbit antiserum by affinity-chromatography using epitope-specific phosphopeptide. The antibody against non-phosphopeptide was removed by chromatography using non-phosphopeptide corresponding to the phosphorylation site.
- Specificity/Sensitivity:** IRS-1 (Phospho-Ser1101) antibody detects endogenous levels of IRS-1 only when phosphorylated at serine 1101.
- Reactivity:** Human, Mouse, Rat
- Applications:** WB: 1:500~1:1000 IHC: 1:50~1:100  
ELISA: 1:5000
- References:** XJ Sun, J. Biol. Chem., Nov 1992; 267: 22662 - 22672.  
Laurent Delahaye, Endocrinology, Dec 1998; 139: 4911.  
Angela M. Valverde, Mol. Cell. Biol., Apr 2001; 21: 2269 - 2280.  
Xiao Jian Sun, J. Biol. Chem., May 1996; 271: 10583.



P-peptide            -            +

Immunohistochemical analysis of paraffin-embedded human colon carcinoma tissue using IRS-1 (Phospho-Ser1101) Antibody (#A0446).



Western blot analysis of extracts from COS7 cells, treated with Calyculin A (50ng/ml, 30mins), using IRS-1 (Phospho-Ser1101) Antibody (#A0446).

**For Research Use Only**

**For Research Use Only**