



Akt1 S1 (Ab-246) Antibody

E11-0453B

Catalog Number: E11-0453B

Concentration: 1mg/ml

Swiss-Prot No.: Q96B36

Other Names: Akt1 substrate 1 (proline-rich), Lobe, MGC2865, PRAS40, proline-rich Akt substrate 40 kDa

Storage/Stability: Store at -20°C/1 year

Form of Antibody: Rabbit IgG in phosphate buffered saline (without Mg^{2+} and Ca^{2+}), pH 7.4, 150mM NaCl, 0.02% sodium azide and 50% glycerol.

Immunogen: The antiserum was produced against synthesized non-phosphopeptide derived from human Akt1S1 around the phosphorylation site of threonine 246 (L-N-T^P-S-D).

Purification: The antibody was affinity-purified from rabbit antiserum by affinity-chromatography using epitope-specific immunogen.

Specificity: Akt1 S1 (Ab-246) antibody detects endogenous levels of total Akt1S1 protein.

Reactivity: Human, Mouse, Rat

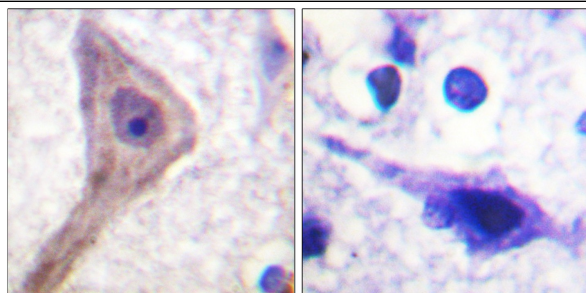
Applications: WB: 1:500~1:1000 IHC: 1:50~1:100 ELISA: 1:1000

References:

Mayumi Yoshioka, J. Mol. Endocrinol., Aug 2007; 39: 119 - 133.

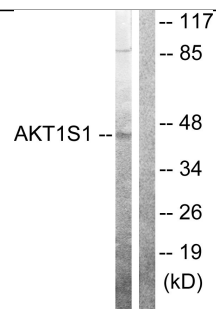
Bruno D. Fonseca, J. Biol. Chem., Aug 2007; 282: 24514 - 24524.

Kerstin Stemmer, Cancer Res., May 2007; 67: 4052 - 4068.



Peptide - +

Immunohistochemistry analysis of paraffin-embedded human brain tissue using Akt1 S1 (Ab-246) antibody.



Peptide - +

Western blot analysis of extracts from 293 cells, using Akt1 S1 (Ab-246) antibody.

For Research Use Only