

Aurora Kinase (Phospho-Thr288) Antibody

E11-0459A

Catalog Number: E11-0459A

Concentration: 1mg/ml

Swiss-Prot No.: O14965

Other Names: AIK, ARK1, AYK1, Aurora-A, Aurora-family kinase 1, Aurora-related kinase 1, Aurora/IPL1-related kinase 1, BTAK, Breast-tumor-amplified kinase, EC 2.7.11.1, IAK1, Ipl1- and aurora-related kinase 1, STK15, STK6, Serine/threonine kinase 15, Serine/threonine kinase 6, Serine/threonine kinase Ayk1, kinase AurA

All Sites: Human: Thr288; Mouse: Thr279; Rat: Thr281

Storage/Stability: Store at -20°C/1 year

Form of Antibody: Rabbit IgG in phosphate buffered saline (without Mg^{2+} and Ca^{2+}), pH 7.4, 150mM NaCl, 0.02% sodium azide and 50% glycerol.

Immunogen: The antiserum was produced against synthesized phosphopeptide derived from human Aurora Kinase around the phosphorylation site of threonine 288 (R-T- T^P -L-C).

Purification: The antibody was affinity-purified from rabbit antiserum by affinity-chromatography using epitope-specific phosphopeptide. The antibody against non-phosphopeptide was removed by chromatography using non-phosphopeptide corresponding to the phosphorylation site.

Specificity: Aurora Kinase (Phospho-Thr288) antibody detects endogenous levels of Aurora Kinase only when phosphorylated at threonine 288.

Reactivity: Human, Mouse, Rat

Applications: WB: 1:500~1:1000 IHC: 1:50~1:100 ELISA: 1:1000

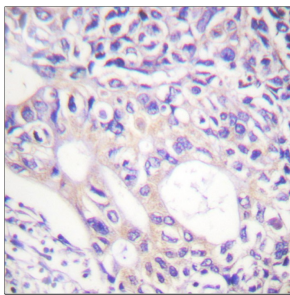
References:

Amy E. Geddis, Blood, Aug 2004; 104: 1017 - 1024.

Edmund Chun Yu Lee, Cancer Res., May 2006; 66: 4996 - 5002.

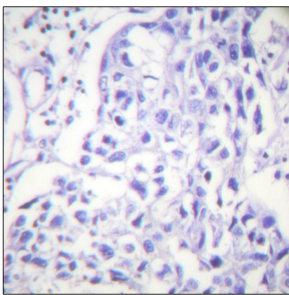
Kaori Sasai, AACR Meeting Abstracts, Apr 2005; 2005: 608.

T Marumoto, Genes Cells, Nov 2002; 7: 1173 - 1182.



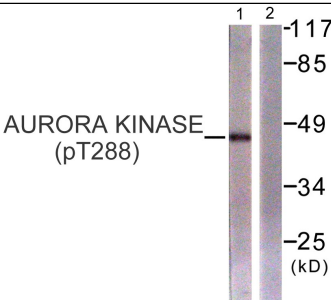
P-peptide

-



+

Immunohistochemistry analysis of paraffin-embedded human breast carcinoma tissue using Aurora Kinase (Phospho-Thr288) antibody.



serum + +

P-peptide - +

Western blot analysis of extracts from 293 cells, treated with serum (20%, 15mins), using Aurora Kinase (Phospho-Thr288) antibody.