



Caldesmon (Phospho-Ser789) Antibody

E11-0462A

Catalog Number: E11-0462A

Concentration: 1mg/ml

Swiss-Prot No.: Q05682

Other Names: CAD, CALD1, CDM, L-caldesmon, Non-muscle caldesmon

All Sites: Human: Ser789; Mouse: Ser560; Rat: Ser534

Storage/Stability: Store at -20°C/1 year

Form of Antibody: Rabbit IgG in phosphate buffered saline (without Mg^{2+} and Ca^{2+}), pH 7.4, 150mM NaCl, 0.02% sodium azide and 50% glycerol.

Immunogen: The antiserum was produced against synthesized phosphopeptide derived from human Caldesmon around the phosphorylation site of serine 789 (V-T-S^P-P-T).

Purification: The antibody was affinity-purified from rabbit antiserum by affinity-chromatography using epitope-specific phosphopeptide. The antibody against non-phosphopeptide was removed by chromatography using non-phosphopeptide corresponding to the phosphorylation site.

Specificity: Caldesmon (Phospho-Ser789) antibody detects endogenous levels of Caldesmon only when phosphorylated at serine 789.

Reactivity: Human, Mouse, Rat

Applications: WB: 1:500~1:1000 IHC: 1:50~1:100 IF: 1:100~1:500 ELISA: 1:1000

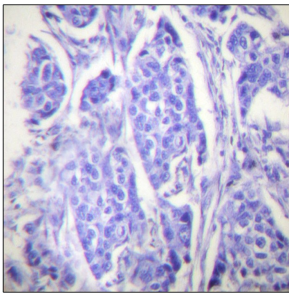
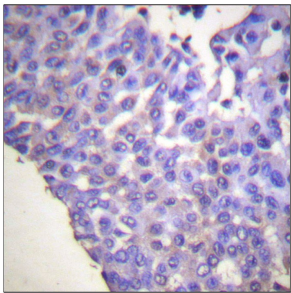
References:

Robert Eves, J. Cell Sci., May 2006; 119: 1691 - 1702.

Shigeko Yamashiro, Mol. Biol. Cell, Jan 2001; 12: 239.

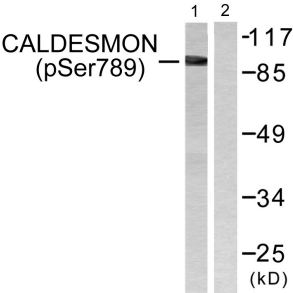
KS Warren, J. Cell Biol., Apr 1994; 125: 359.

Ping-Pin Zheng, Am. J. Pathol., Jun 2004; 164: 2217 - 2228.



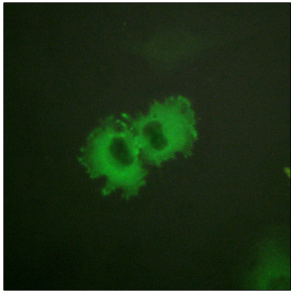
P-peptide - +

Immunohistochemistry analysis of paraffin-embedded human breast carcinoma tissue using Caldesmon (Phospho-Ser789) antibody.



EGF + +
P-peptide - +

Western blot analysis of extracts from HeLa cells, treated with EGF (200ng/ml, 30mins), using Caldesmon (Phospho-Ser789) antibody.



P-peptide - +

Immunofluorescence analysis of HeLa cells, using Caldesmon (Phospho-Ser789) antibody.