



## Caldesmon (Ab-789) Antibody

E11-0462B

**Catalog Number:** E11-0462B

**Concentration:** 1mg/ml

**Swiss-Prot No.:** Q05682

**Other Names:** CAD, CALD1, CDM, L-caldesmon, Non-muscle caldesmon

**Storage/Stability:** Store at -20°C/1 year

**Form of Antibody:** Rabbit IgG in phosphate buffered saline (without Mg<sup>2+</sup> and Ca<sup>2+</sup>), pH 7.4, 150mM NaCl, 0.02% sodium azide and 50% glycerol.

**Immunogen:** The antiserum was produced against synthesized non-phosphopeptide derived from human Caldesmon around the phosphorylation site of serine 789 (V-T-S<sup>P</sup>-P-T).

**Purification:** The antibody was affinity-purified from rabbit antiserum by affinity-chromatography using epitope-specific immunogen.

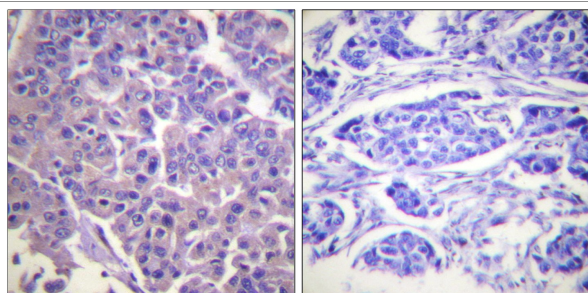
**Specificity:** Caldesmon (Ab-789) antibody detects endogenous levels of total Caldesmon protein.

**Reactivity:** Human, Mouse, Rat

**Applications:** WB: 1:500~1:1000 IHC: 1:50~1:100  
IF: 1:100~1:500 ELISA: 1:5000

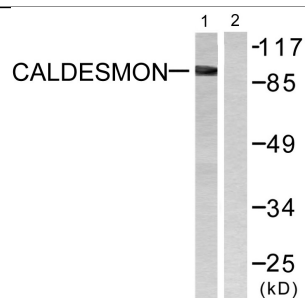
**References:**

Robert Eves, J. Cell Sci., May 2006; 119: 1691 - 1702.  
Shigeko Yamashiro, Mol. Biol. Cell, Jan 2001; 12: 239.  
KS Warren, J. Cell Biol., Apr 1994; 125: 359.



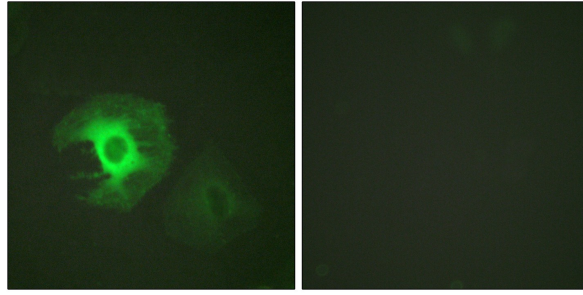
Peptide            -                    +

Immunohistochemistry analysis of paraffin-embedded human breast carcinoma tissue using Caldesmon (Ab-789) antibody.



EGF    +    +  
Peptide -    +

Western blot analysis of extracts from HeLa cells, treated with EGF (200ng/ml, 30mins), using Caldesmon (Ab-789) antibody.



Peptide            -                    +

Immunofluorescence analysis of HeLa cells, using  
Caldesmon (Ab-789) antibody.