



## CBL (Ab-700) Antibody

E11-0466B

**Catalog Number:** E11-0466B

**Concentration:** 1mg/ml

**Swiss-Prot No.:** P22681

**Other Names:** CBL E3 ubiquitin protein ligase, CBL2, EC 6.3.2.-, Proto-oncogene c-CBL, Signal transduction protein CBL

**Storage/Stability:** Store at -20°C/1 year

**Form of Antibody:** Rabbit IgG in phosphate buffered saline (without Mg<sup>2+</sup> and Ca<sup>2+</sup>), pH 7.4, 150mM NaCl, 0.02% sodium azide and 50% glycerol.

**Immunogen:** The antiserum was produced against synthesized non-phosphopeptide derived from human CBL around the phosphorylation site of tyrosine 700 (T-E-Y<sup>P</sup>-M-T).

**Purification:** The antibody was affinity-purified from rabbit antiserum by affinity-chromatography using epitope-specific immunogen.

**Specificity:** CBL (Ab-700) antibody detects endogenous levels of total CBL protein.

**Reactivity:** Human, Mouse, Rat

**Applications:** WB: 1:500~1:1000 IHC: 1:50~1:100  
IF: 1:100~1:500 ELISA: 1:1000

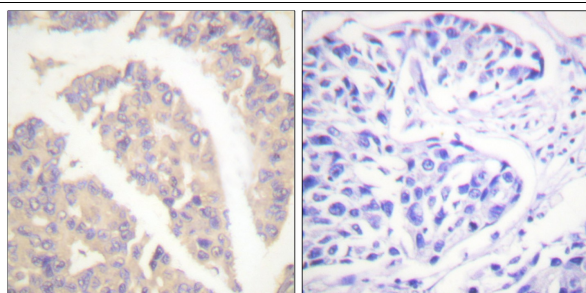
### References:

Stefanie Loeser, J. Exp. Med., Apr 2007; 204: 879 - 891.

A Oda, K Ozaki, Blood, Aug 1996; 88: 1330 - 1338.

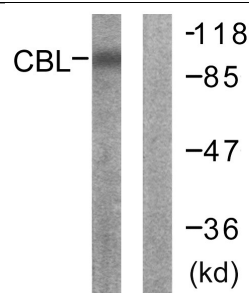
Yajun Yi, J. Immunol., Dec 2000; 165: 6627.

Ke Liang, AACR Meeting Abstracts, Apr 2005; 2005: 1296.



Peptide - +

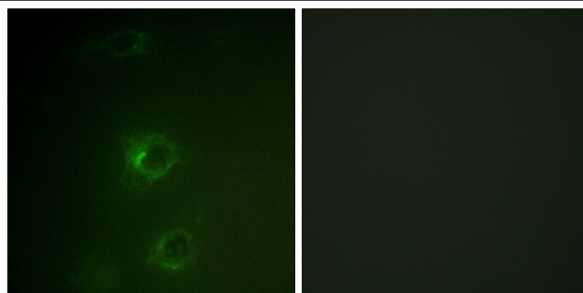
Immunohistochemistry analysis of paraffin-embedded human breast carcinoma tissue using CBL (Ab-700) antibody.



Peptide - +

Western blot analysis of extracts from 293 cells, using CBL (Ab-700) antibody.

**For Research Use Only**



Peptide                -                +

Immunofluorescence analysis of COS7 cells, using CBL  
(Ab-700) antibody.